



Individual mounting

Series

Inline

1100

55

56

57

58

59

700

900

82

6300

6500

6600

2700

1800

ISO 1

ISO 2

ISO 3

Function	Port size	Flow (Max)	Individual mounting	Series
5/2 - 5/3	1/4"	1.4 C_v	Inline	

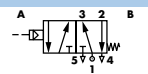
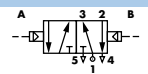
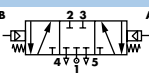
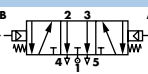
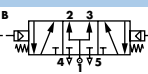
OPERATIONAL BENEFITS

1. Balanced spool, immune to variations of pressure.
2. Short stroke with high flow.
3. The piston (booster) provides maximum shifting forces.
4. Powerful return thanks to the combination of mechanical and air springs.
5. Bonded spool with minimum friction, shifting in a glass-like finished bore.
6. Wiping effect eliminates sticking.
7. Low leakage rate.



- 1100
- 55
- 56
- 57
- 58
- 59
- 700
- 900
- 82
- 6300
- 6500
- 6600
- 2700
- 1800**
- ISO 1
- ISO 2
- ISO 3

HOW TO ORDER

Port size	5/2 Single operator	5/2 Double operator	5/3 Closed center	5/3 Open center	5/3 Pressure center
1/4" NPTF	 180001-112-0003	 180003-112-0003	 180304-512-0304	 180304-612-0304	 180304-812-0304

Air pilot port : 1/8" NPTF.

Options : Side pilot port : replace code 0003 by 0010 (2 positions valves only).

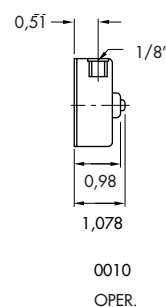
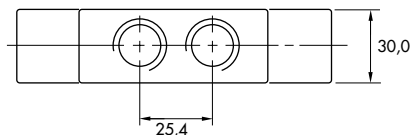
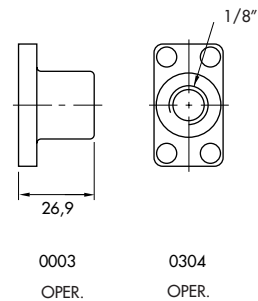
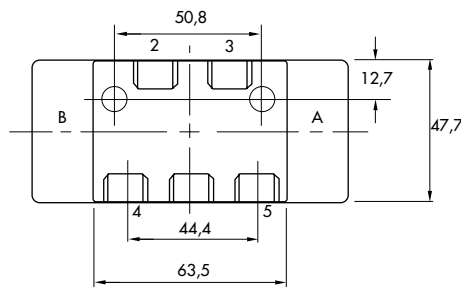
TECHNICAL DATA

Fluid :	Compressed air, vacuum, inert gases
Pressure range :	Vacuum to 200 PSI
Air signal pressure :	Single operator and 3 positions : 20 to 150 PSI Double operator : 10 to 150 PSI
Lubrication :	Not required, if used select a medium aniline point lubricant (between 180°F to 210°F)
Filtration :	40 μ
Temperature range :	0°F to 120°F (-18°C to 50°C)
Flow (at 6 bar, ΔP=1bar) :	1/4" - 3/8" : (1.4 C _v)
Leak rate :	50 cm ³ /min

- Spare parts : • Remote air operator (2 positions) : 180003. • Remote air operator (3 positions) : 180304.
- Options : • BSPP threads. • 3/8" ports (ports 1, 2 & 3 - MOD. 0358 required).

DIMENSIONS

Dimensions shown are metric (mm)



Function	Port size	Flow [Max]	Individual mounting	Series
5/2	1/4"	1.4 C_v	Inline	

OPERATIONAL BENEFITS

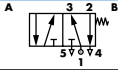
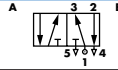
1. Short stroke with high flow.
2. Powerful return force.
3. Bonded spool with minimum friction, shifting in a glass-like finished bore.
4. Wiping effect eliminates sticking.
5. Long service life.



1100

1800

HOW TO ORDER

Port size	Single operator	Double operator
		
1/4" NPTF	180001-112-XXXX	18XXXX-112-XXXX

MECHANICAL OPERATOR >

XXXX

Code	Description	Code	Description	Code	Description
0111	Cam roller parallel to ports 2 & 3	0024	Lever non-locking pull perpendicular to body	0033	Push button with guard
0112	Cam roller perpendicular to ports 2 & 3	0025	Lever locking push parallel to body	0034	Push Pull
0013	Lever cam perpendicular to ports 2 & 3	0026	Lever non-locking push parallel to body	0035	Push Pull (panel mounting)
0014	Lever cam parallel to ports 2 & 3	0027	Lever locking pull parallel to body	0036	Palm button
0021	Lever locking push perpendicular to body	0028	Lever non-locking pull parallel to body	0037	Palm button (panel mounting)
0022	Lever non-locking push perpendicular to body	0031	Push button	0038	Palm button with guard
0023	Lever locking pull perpendicular to body	0032	Push button (panel mounting)	0039	Push Pull palm button

OPTIONS

002X

Replace 0 by 2 for lever operator with boot (see photo)

TECHNICAL DATA

Fluid :	Compressed air, vacuum, inert gases
Pressure range :	Vacuum to 200 PSI
Lubrication :	Not required, if used select a medium aniline point lubricant (between 180°F to 210°F)
Filtration :	40 µ
Temperature range :	0°F to 120°F (-18°C to 50°C)
Flow (at 6 bar, ΔP=1bar) :	1/4" : (1.4-C _v)
Leak rate :	50 cm ³ /min

- Spare parts : • Operator : 18XXXX (see codification).
- Options : • BSPP threads. • 3/8" ports (ports 1,2 & 3 - MOD. 0358 required).

DIMENSIONS

Dimensions shown are metric (mm)

