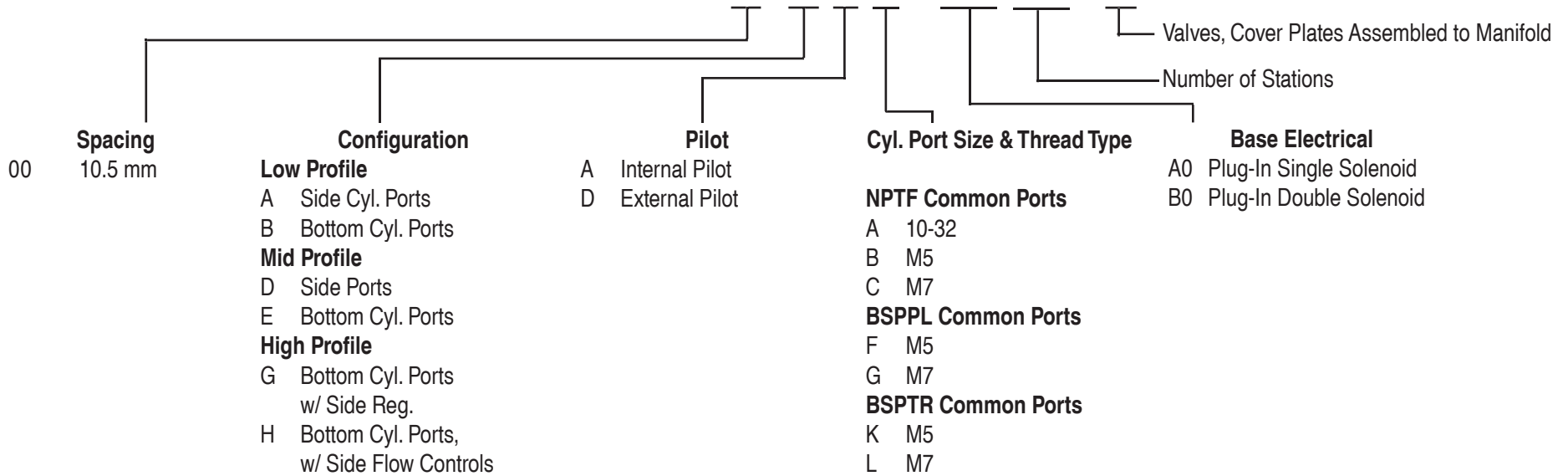


How To Order 24 Series ECD Circuit Bar

ECD24A - XX X X X - XX XX - 9



00 Spacing
10.5 mm

Configuration
Low Profile
 A Side Cyl. Ports
 B Bottom Cyl. Ports
Mid Profile
 D Side Ports
 E Bottom Cyl. Ports
High Profile
 G Bottom Cyl. Ports
 w/ Side Reg.
 H Bottom Cyl. Ports,
 w/ Side Flow Controls

Pilot
 A Internal Pilot
 D External Pilot

Cyl. Port Size & Thread Type
NPTF Common Ports
 A 10-32
 B M5
 C M7
BSPPL Common Ports
 F M5
 G M7
BSPTR Common Ports
 K M5
 L M7

Valves, Cover Plates Assembled to Manifold
 Number of Stations
Base Electrical
 A0 Plug-In Single Solenoid
 B0 Plug-In Double Solenoid

Configurations "A" & "B"
 available as internal pilot only.

Note: Flow controls are integral,
 regulator must be ordered
 separately.

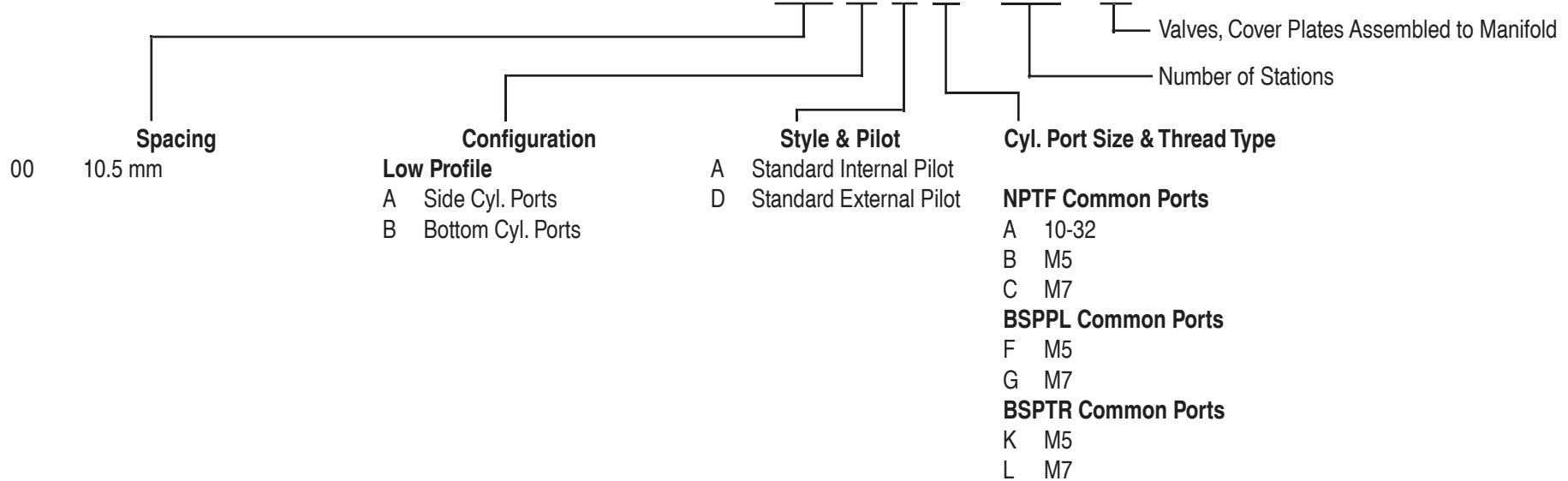
Note: Common Ports are 1/4"

Accessories

- | | |
|----------|-----------------------------|
| M-24004 | Blank Station Cover Plate |
| 16942-01 | Base Wire Plug-In Protector |
| 32625 | M6 Tube Receptacle |
| 32627 | 1/4" Tube Receptacle |

How To Order 24 Series EBM Circuit Bar

EBM24A - XX X X X - XX - 9



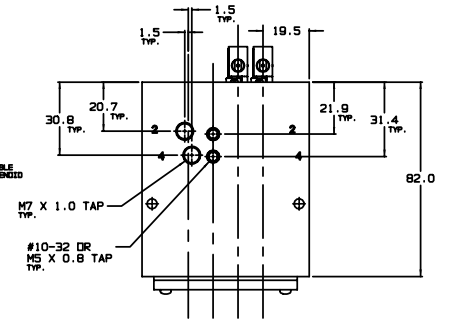
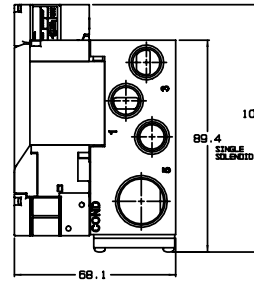
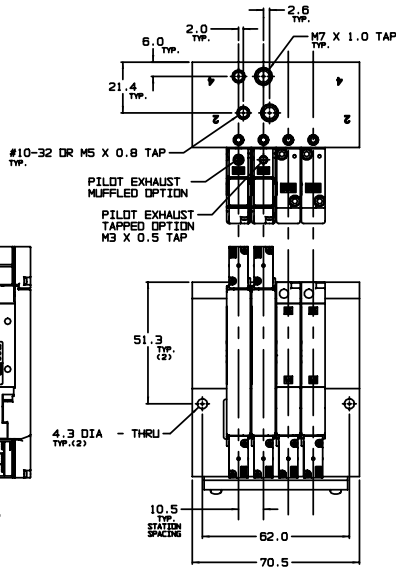
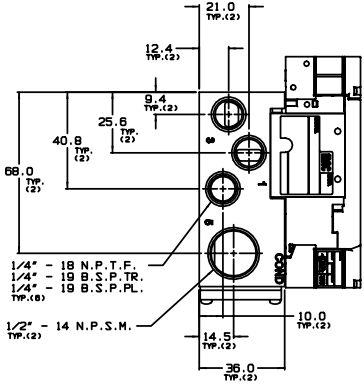
Note: Common Ports are 1/4"

Accessories

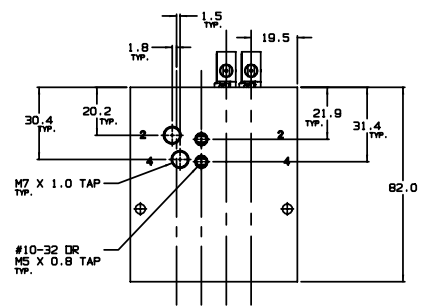
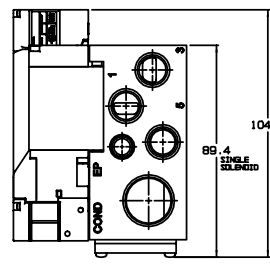
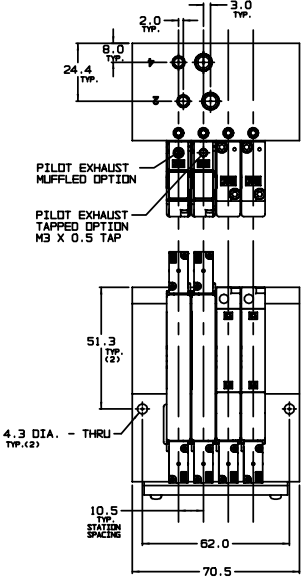
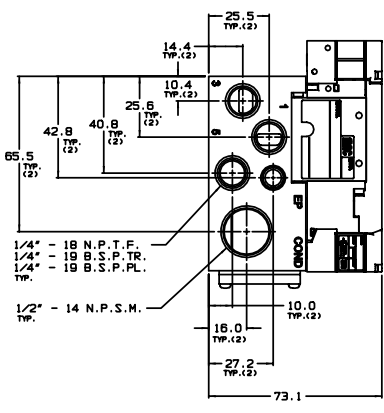
M-24004	Blank Station Cover Plate
N-24005	Body Fastening Kit
32625	M6 Tube Receptacle (For M7 Port)
32627	1/4" Tube Receptacle (For M7 Port)

LOW PROFILE

24 SERIES ECD CIRCUIT BAR



MID PROFILE



HIGH PROFILE

