

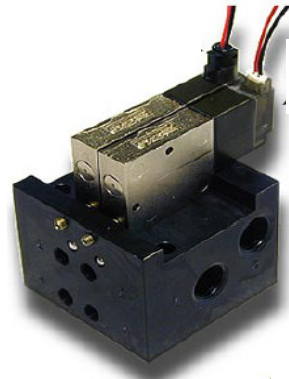


Direct solenoid and solenoid pilot operated valves

Function	Port size	Flow [Max]	Circuit bar mounting	Series
5/2	M3 - #10-32 - M5 - 1/8" tube rec.	.07 Cv	Non plug-in	43

OPERATIONAL BENEFITS

1. 8mm direct solenoid operated valve
2. Balanced poppet, immune to variations of pressure
3. Short stroke with high flow
4. The patented solenoid develops high shifting forces
5. Powerful return spring
6. Flow is specifically adjusted on each valve
7. Manual operator standard on each valve



HOW TO ORDER

HOW TO ORDER VALVE FOR CIRCUIT BAR MOUNTING

Port size (see base)	Valve
Valve less base	43A-L00-Rxxx-xxx

SOLENOID OPERATOR

R XX X - X XX

<u>XX</u> Voltage	<u>X</u> Lead Wire Length	<u>X</u> Manual Operator	<u>XX</u> Electrical Connection
DC 24VDC (1.8W)	0* No lead wires	0 No operator	BA Flying leads
DD 24VDC (2.5W)	A 18"	1 Recessed non locking	BB Flying leads with LED
DF 24VDC (4.0W)	B 24"	3 Extended non locking	RA Mini JAC solenoid plug-in
DJ 12VDC (1.8W)			RB Mini JAC solenoid plug-in with LED
DK 12VDC (2.5W)	*Not available for flying leads connector		TA JST solenoid plug-in
DM 12VDC (4.0W)			TB JST solenoid plug-in with LED

HOW TO ORDER CIRCUIT BAR

Port size	Side cylinder ports	Bottom cylinder ports
M3	EBP43A-001AA-xx	EBP43A-002AA-xx
#10-32 UNF	EBP43A-001AD-xx	EBP43A-002AD-xx
M5	EBP43A-001AG-xx	EBP43A-002AG-xx
1/8" tube receptacle	EBP43A-001AK-xx	EBP43A-002AK-xx

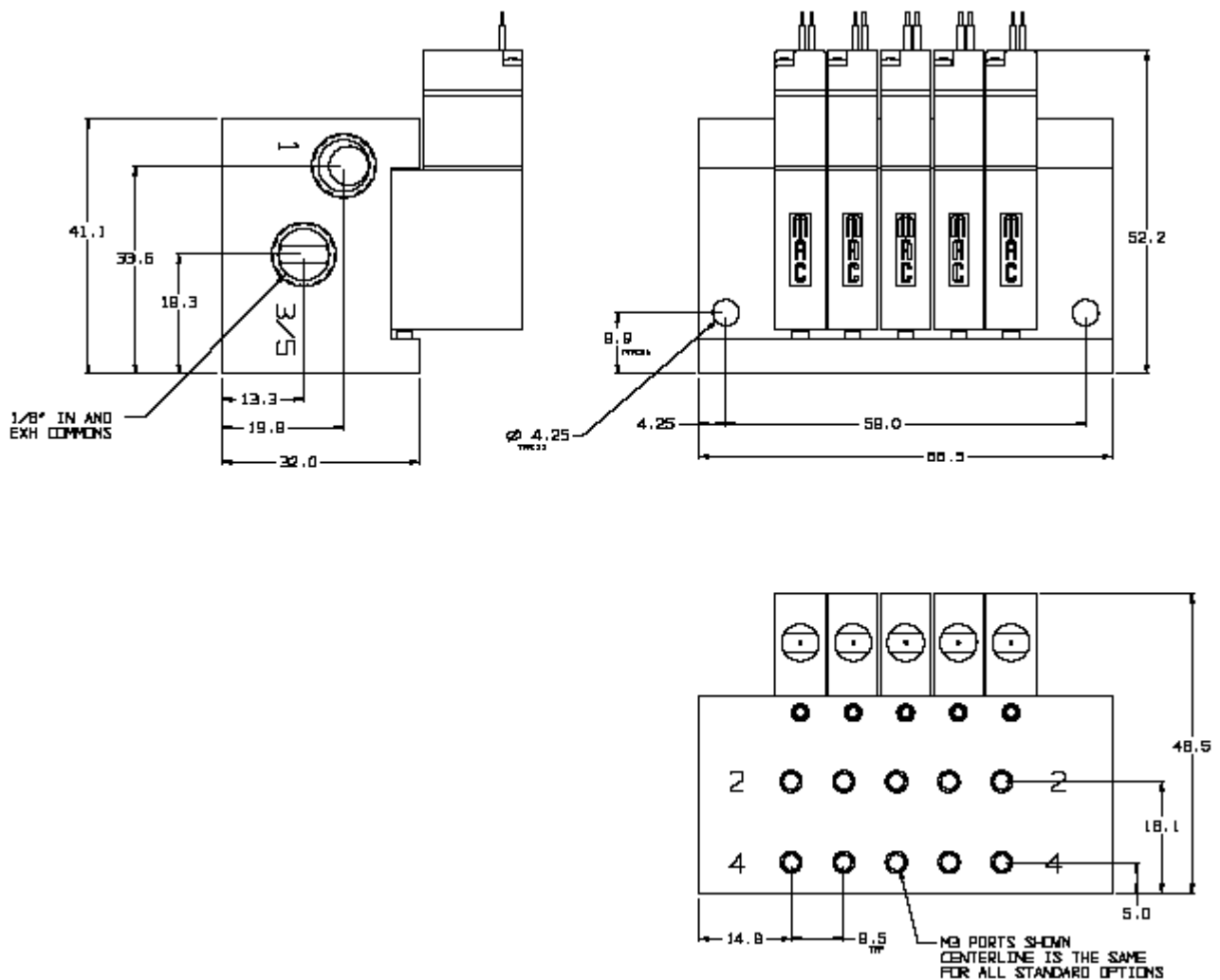
xx = Number of stations

Direct solenoid and solenoid pilot operated valves

TECHNICAL DATA

Fluid:	Compressed air, vacuum, inert gases
Pressure range:	Vacuum to 120 PSI
Lubrication:	Not required, if used select a medium aniline point lubricant (between 180°F and 210°F)
Filtration:	40μ
Temperature range:	0°F to 120°F (-18°C to +50°C)
Orifice:	1,6 mm
Flow (at 6 bar ΔP=1bar):	4.0 W: .07 Cv – 3.0 W: .05 Cv – 2.5 W: .04 Cv – 1.8 W: .03 Cv
Voltage range:	-15% to +10% of nominal voltage
Power:	4.0 W – 3.0 W – 2.5 W – 1.8 W

DIMENSIONS



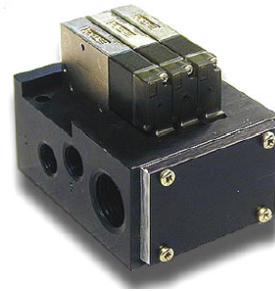


Direct solenoid and solenoid pilot operated valves

Function	Port size	Flow [Max]	Circuit bar mounting	Series
5/2	M3 - #10-32 - M5 - 1/8" tube rec.	.07 Cv	Plug-in	43

OPERATIONAL BENEFITS

1. 8mm direct solenoid operated valve
2. Balanced poppet, immune to variations of pressure
3. Short stroke with high flow
4. The patented solenoid develops high shifting forces
5. Powerful return spring
6. Flow is specifically adjusted on each valve
7. Manual operator standard on each valve



HOW TO ORDER

HOW TO ORDER VALVE FOR CIRCUIT BAR MOUNTING

Port size (see base)	Valve
	
Valve less base	43A-L00-RxxP-xxx

SOLENOID OPERATOR

R **XX** P - X **XX**

XX Voltage	X Manual Operator	XX Electrical Connection
DC 24VDC (1,8W)	0 No operator	DA Base plug-in
DD 24VDC (2,5W)	1 Non locking recessed	DB Base plug-in with LED
DF 24VDC (4.0W)	3 Non locking extended	DC Base plug-in with MOV
DJ 12VDC (1,8W)		DD Base plug-in with LED & MOV
DK 12VDC (2,5W)		
DM 12VDC (4.0W)		

HOW TO ORDER CIRCUIT BAR

Port size	Side cylinder ports	Bottom cylinder ports
M3	ECD43A-001AA-A0xx	ECD43A-002AA-A0xx
#10-32 UNF	ECD43A-001AD-A0xx	ECD43A-002AD-A0xx
M5	ECD43A-001AG-A0xx	ECD43A-002AG-A0xx
1/8" tube receptacle	ECD43A-001AK-A0xx	ECD43A-002AK-A0xx

xx = Number of stations

TECHNICAL DATA

Fluid:	Compressed air, vacuum, inert gases
Pressure range:	Vacuum to 120 PSI
Lubrication:	Not required, if used select a medium aniline point lubricant (between 180°F and 210°F)
Filtration:	40μ
Temperature range:	0°F to 120°F (-18°C to +50°C)
Orifice:	1,6 mm
Flow (at 6 bar ΔP=1bar):	4.0 W: .07 Cv – 3.0 W: .05 Cv – 2.5 W: .04 Cv – 1.8 W: .03 Cv
Voltage range:	-15% to +10% of nominal voltage
Power:	4.0 W – 3.0 W – 2.5 W – 1.8 W

DIMENSIONS

