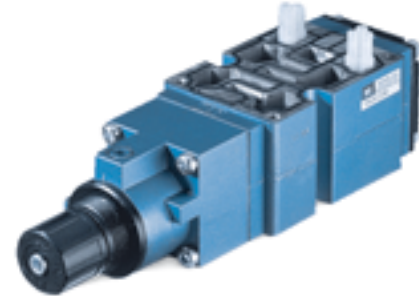


**Sandwich pressure regulator with manual adjust knob.**

**OPERATIONAL BENEFITS**

1. Easy mounting : saves on installation costs in comparison with inline regulators.
2. Allows to have compact, all-included units.
3. Large orifice provides high flow.
4. Various functions available.
5. Simple, reliable and solid design.



**PR82A**  
**PR63D**  
**PR65C**

**HOW TO ORDER**

REGULATORS FOR "PLUG-IN" VALVES

Gauges	Single pressure Regulator A end Same regulated pressure to ports A and B	Single pressure Regulator B end Same regulated pressure to ports A and B	Dual pressure Regulator A end Regulated pressure to port B *	Dual pressure Regulator B end Regulated pressure to port A *	Dual pressure Dual regulator Two regulated pressures to ports A and B *
No gauge	PR63D-22AA	PR63D-21AA	PR63D-24AA	PR63D-23AA	PR63D-25AA
Glycerine filled gauge on regulator(s)	PR63D-22BA	PR63D-21BA	PR63D-24BA	PR63D-23BA	PR63D-25DA
Glycerine filled gauge opposite to regulator	PR63D-22CA	PR63D-21CA	PR63D-24CA	PR63D-23CA	-----
Non-filled gauge on regulator(s)	PR63D-22FA	PR63D-21FA	PR63D-24FA	PR63D-23FA	PR63D-25HA
Non-filled gauge opposite to regulator	PR63D-22GA	PR63D-21GA	PR63D-24GA	PR63D-23GA	-----

Note : above models are coded for use with double solenoid plug-in valves.

REGULATORS FOR "NON PLUG-IN" AND REMOTE AIR VALVES

Gauges	Single pressure Regulator A end Same regulated pressure to ports A and B	Single pressure Regulator B end Same regulated pressure to ports A and B	Dual pressure Regulator A end Regulated pressure to port B *	Dual pressure Regulator B end Regulated pressure to port A *	Dual pressure Dual regulator Two regulated pressures to ports A and B *
No gauge	PR63D-32AA	PR63D-31AA	PR63D-34AA	PR63D-33AA	PR63D-35AA
Glycerine filled gauge on regulator(s)	PR63D-32BA	PR63D-31BA	PR63D-34BA	PR63D-33BA	PR63D-35DA
Glycerine filled gauge opposite to regulator	PR63D-32CA	PR63D-31CA	PR63D-34CA	PR63D-33CA	-----
Non-filled gauge on regulator(s)	PR63D-32FA	PR63D-31FA	PR63D-34FA	PR63D-33FA	PR63D-35HA
Non-filled gauge opposite to regulator	PR63D-32GA	PR63D-31GA	PR63D-34GA	PR63D-33GA	-----

Note : regulating range for above models is 0-150 PSI.  
For other ranges see technical data page.

\* To be used with dual pressure valves (manifolds only).

**PLUG-IN OPTIONS**

PR63D-xxxx

- Replace by 1 for single solenoid plug-in with knob adjustment.

**ADJUSTMENT OPTIONS**

PR63D-xxxx

- Replace by A for slotted stem adjustment for single solenoid plug-in.
- Replace by B for slotted stem adjustment for double solenoid plug-in.
- Replace by C for slotted stem adjustment for non plug-in valves.
- Replace by E for slotted stem with locknut for single solenoid plug-in.
- Replace by F for slotted stem with locknut for double solenoid plug-in.
- Replace by G for slotted stem with locknut for non plug-in valves.

Consult "Precautions" page 364 before use, installation or service of MAC Valves

**PRA1A**  
**PRA2D**  
**PRA3C**

**PR125A**  
**PR250B**

**TECHNICAL DATA**

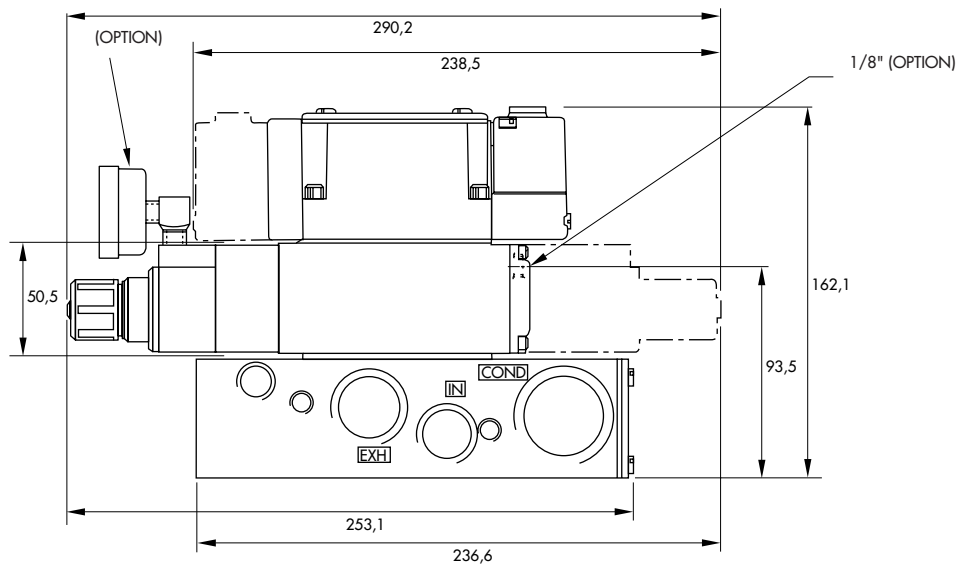
<b>Fluid :</b>	Compressed air, inert gases
<b>Pressure range :</b>	0 to 150 PSI
<b>Regulating range :</b>	0 to 150 PSI (other ranges see below)
<b>Lubrication :</b>	Not required, if used select a medium aniline point lubricant (between 180°F to 210°F)
<b>Filtration :</b>	40 μ
<b>Temperature range :</b>	0°F to 120°F (-18°C to 50°C)
<b>Flow :</b>	(2.4 C <sub>v</sub> )

Spare parts :  
 • Pressure regulator (less sandwich block) : PR63D-41AA (KNOB), PR63D-D1AA (SLOTTED STEM), PR63D-H1AA (SLOTTED STEM WITH LOCKNUT).  
 • Gauges : • Glycerine filled : N-62015-01  
 • Non filled : N-62016-01

Regulating range options : PR63D-XXXX  
 — Replace by B - 0 to 100 PSI  
 — Replace by C - 0 to 45 PSI

**DIMENSIONS**

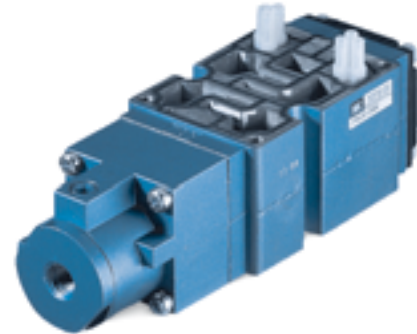
Dimensions shown are metric (mm)



**Sandwich pressure regulator with air pilot adjust.**

**OPERATIONAL BENEFITS**

1. Easy mounting : saves on installation costs in comparison with inline regulators.
2. Allows to have compact, all-included units.
3. Large orifice provides high flow.
4. Various functions available.
5. Simple, reliable and solid design.



**PR82A**  
**PR63D**  
**PR65C**

**HOW TO ORDER**

REGULATORS FOR "PLUG-IN" VALVES

Gauges	Single pressure Regulator A end Same regulated pressure to ports A and B	Single pressure Regulator B end Same regulated pressure to ports A and B	Dual pressure Regulator A end Regulated pressure to port B *	Dual pressure Regulator B end Regulated pressure to port A *	Dual pressure Dual regulator Two regulated pressures to ports A and B *
No gauge	PR63D-2BAA	PR63D-2AAA	PR63D-2DAA	PR63D-2CAA	PR63D-2EAA
Glycerine filled gauge on regulator(s)	PR63D-2BBA	PR63D-2ABA	PR63D-2DBA	PR63D-2CBA	PR63D-2EDA
Glycerine filled gauge opposite to regulator	PR63D-2BCA	PR63D-2ACA	PR63D-2DCA	PR63D-2CCA	-----
Non-filled gauge on regulator(s)	PR63D-2BFA	PR63D-2AFA	PR63D-2DFA	PR63D-2CFA	PR63D-2EHA
Non-filled gauge opposite to regulator	PR63D-2BGA	PR63D-2AGA	PR63D-2DGA	PR63D-2CGA	-----

Note : above models are coded for use with double solenoid plug-in valves.

REGULATORS FOR "NON PLUG-IN" AND REMOTE AIR VALVES

Gauges	Single pressure Regulator A end Same regulated pressure to ports A and B	Single pressure Regulator B end Same regulated pressure to ports A and B	Dual pressure Regulator A end Regulated pressure to port B *	Dual pressure Regulator B end Regulated pressure to port A *	Dual pressure Dual regulator Two regulated pressures to ports A and B *
No gauge	PR63D-3BAA	PR63D-3AAA	PR63D-3DAA	PR63D-3CAA	PR63D-3EAA
Glycerine filled gauge on regulator(s)	PR63D-3BBA	PR63D-3ABA	PR63D-3DBA	PR63D-3CBA	PR63D-3EDA
Glycerine filled gauge opposite to regulator	PR63D-3BCA	PR63D-3ACA	PR63D-3DCA	PR63D-3CCA	-----
Non-filled gauge on regulator(s)	PR63D-3BFA	PR63D-3AFA	PR63D-3DFA	PR63D-3CFA	PR63D-3EHA
Non-filled gauge opposite to regulator	PR63D-3BGA	PR63D-3AGA	PR63D-3DGA	PR63D-3CGA	-----

\* To be used with dual pressure valves (available only on manifolds).

**PLUG-IN OPTIONS**

PR63D-xxxx

- Replace by 1 for single solenoid plug-in.

**PRA1A**  
**PRA2D**  
**PRA3C**

**PR125A**  
**PR250B**

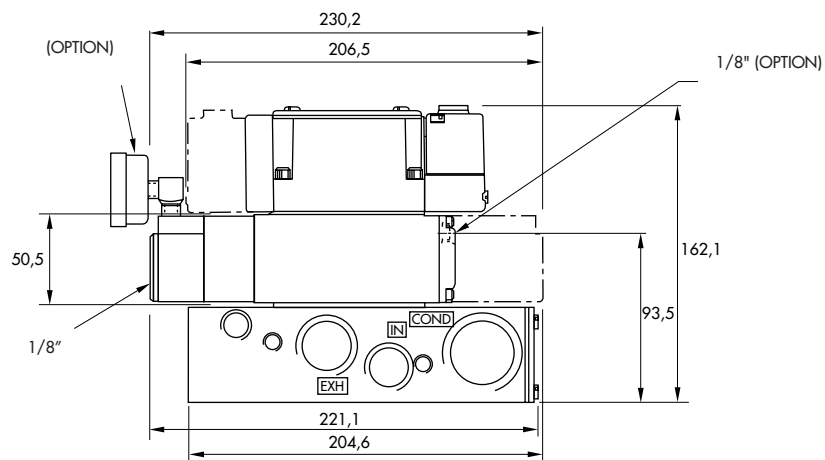
**TECHNICAL DATA**

<b>Fluid :</b>	Compressed air, inert gases
<b>Pressure range :</b>	0 to 150 PSI
<b>Regulating range :</b>	0 to 150 PSI
<b>Lubrication :</b>	Not required, if used select a medium aniline point lubricant (between 180°F to 210°F)
<b>Filtration :</b>	40 μ
<b>Temperature range :</b>	0°F to 120°F (-18°C to 50°C)
<b>Flow (at 6 bar, ΔP=1bar) :</b>	(2.4 C <sub>v</sub> )

- Spare parts :
- Pressure regulator (less sandwich block) : PR63D-4AAA.
  - Gauges : • Glycerine filled : N-62015-01  
• Non filled : N-62016-01

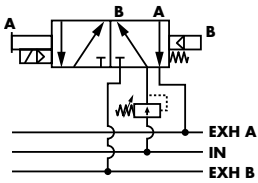
**DIMENSIONS**

Dimensions shown are metric (mm)



# Manual adjust

Single regulator  
Single pressure

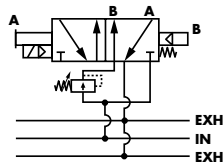


P. 305

P. 309

P. 313

Single regulator  
Dual pressure

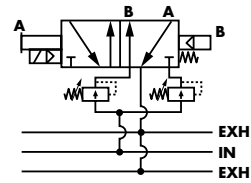


P. 305

P. 309

P. 313

Dual regulator  
Dual pressure

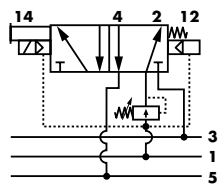


P. 305

P. 309

P. 313

Single regulator  
Single pressure

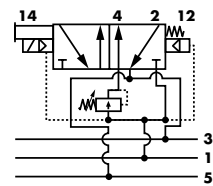


P. 317

P. 321

P. 325

Single regulator  
Dual pressure

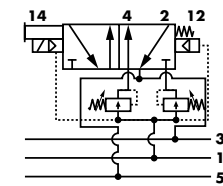


P. 317

P. 321

P. 325

Dual regulator  
Dual pressure

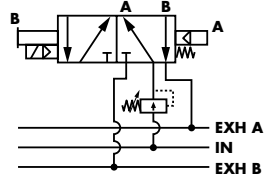


P. 317

P. 321

P. 325

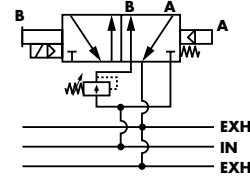
Single regulator  
Single pressure



P. 329

P. 333

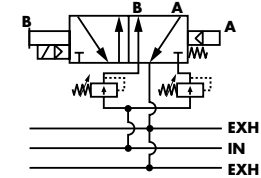
Single regulator  
Dual pressure



P. 329

P. 333

Dual regulator  
Dual pressure



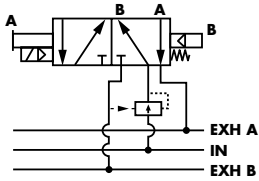
P. 329

P. 333

# Air adjust

Series

Single regulator  
Single pressure

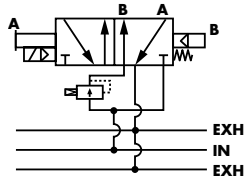


P. 307

P. 311

P. 315

Single regulator  
Dual pressure

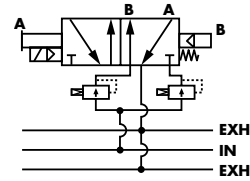


P. 307

P. 311

P. 315

Dual regulator  
Dual pressure



P. 307

P. 311

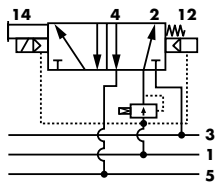
P. 315

**PR82A**

**PR63D**

**PR65C**

Single regulator  
Single pressure

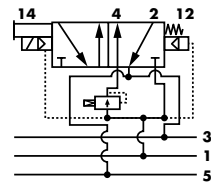


P. 319

P. 323

P. 327

Single regulator  
Dual pressure

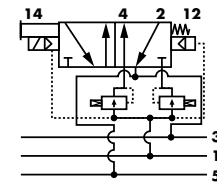


P. 319

P. 323

P. 327

Dual regulator  
Dual pressure



P. 319

P. 323

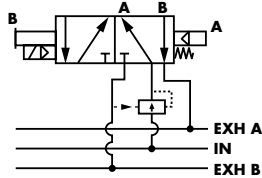
P. 327

**PRA1A**

**PRA2D**

**PRA3C**

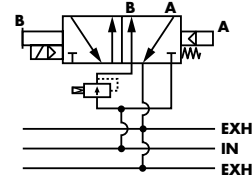
Single regulator  
Single pressure



P. 331

P. 335

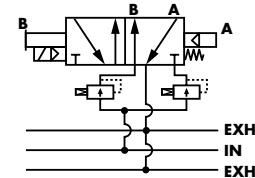
Single regulator  
Dual pressure



P. 331

P. 335

Dual regulator  
Dual pressure



P. 331

P. 335

**PR125A**

**PR250B**