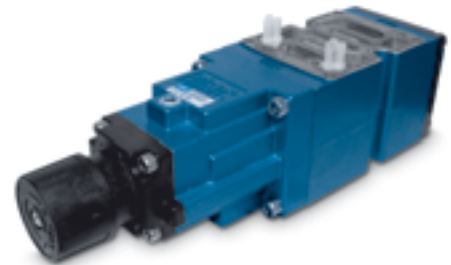


Sandwich pressure regulator with manual adjust knob.

OPERATIONAL BENEFITS

1. Easy mounting : saves on installation costs in comparison with inline regulators.
2. Allows to have compact, all-included units.
3. Large orifice provides high flow.
4. Various functions available.
5. Simple, reliable and solid design.



PR82A
PR63D
PR65C

HOW TO ORDER

REGULATORS FOR "PLUG-IN" VALVES

Gauges	Single pressure Regulator A end Same regulated pressure to ports A and B	Single pressure Regulator B end Same regulated pressure to ports A and B	Dual pressure Regulator A end Regulated pressure to port B	Dual pressure Regulator B end Regulated pressure to port A	Dual pressure Dual regulator Two regulated pressures to ports A and B
No gauge	PR65C-22AA	PR65C-21AA	PR65C-24AA	PR65C-23AA	PR65C-25AA
Glycerine filled gauge on regulator(s)	PR65C-22BA	PR65C-21BA	PR65C-24BA	PR65C-23BA	PR65C-25DA
Glycerine filled gauge opposite to regulator	PR65C-22CA	PR65C-21CA	PR65C-24CA	PR65C-23CA	-----
Non-filled gauge on regulator(s)	PR65C-22FA	PR65C-21FA	PR65C-24FA	PR65C-23FA	PR65C-25HA
Non-filled gauge opposite to regulator	PR65C-22GA	PR65C-21GA	PR65C-24GA	PR65C-23GA	-----

Note : above models are coded for use with double solenoid plug-in valves.

REGULATORS FOR "NON PLUG-IN" AND REMOTE AIR VALVES

Gauges	Single pressure Regulator A end Same regulated pressure to ports A and B	Single pressure Regulator B end Same regulated pressure to ports A and B	Dual pressure Regulator A end Regulated pressure to port B	Dual pressure Regulator B end Regulated pressure to port A	Dual pressure Dual regulator Two regulated pressures to ports A and B
No gauge	PR65C-32AA	PR65C-31AA	PR65C-34AA	PR65C-33AA	PR65C-35AA
Glycerine filled gauge on regulator(s)	PR65C-32BA	PR65C-31BA	PR65C-34BA	PR65C-33BA	PR65C-35DA
Glycerine filled gauge opposite to regulator	PR65C-32CA	PR65C-31CA	PR65C-34CA	PR65C-33CA	-----
Non-filled gauge on regulator(s)	PR65C-32FA	PR65C-31FA	PR65C-34FA	PR65C-33FA	PR65C-35HA
Non-filled gauge opposite to regulator	PR65C-32GA	PR65C-31GA	PR65C-34GA	PR65C-33GA	-----

Note : regulating range for above models is 0-150 PSI. For other ranges see technical data page.

PLUG-IN OPTIONS

PR65C-xxxx
- Replace by 1 for single solenoid plug-in with knob adjustment.

ADJUSTMENT OPTIONS

- PR65C-xxxx
- Replace by A for slotted stem adjustment for single solenoid plug-in.
 - Replace by B for slotted stem adjustment for double solenoid plug-in.
 - Replace by C for slotted stem adjustment for non plug-in valves.
 - Replace by E for slotted stem with locknut for single solenoid plug-in.
 - Replace by F for slotted stem with locknut for double solenoid plug-in.
 - Replace by G for slotted stem with locknut for non plug-in valves.

Consult "Precautions" page 364 before use, installation or service of MAC Valves

PRA1A
PRA2D
PRA3C

PR125A
PR250B

TECHNICAL DATA

Fluid :	Compressed air, inert gases
Pressure range :	0 to 150 PSI
Regulating range :	0 to 150 PSI (other ranges see below)
Lubrication :	Not required, if used select a medium aniline point lubricant (between 180°F to 210°F)
Filtration :	40 μ
Temperature range :	0°F to 120°F (-18°C to 50°C)
Flow (at 6 bar, ΔP=1bar) :	(4.0 C _v)

Spare parts :

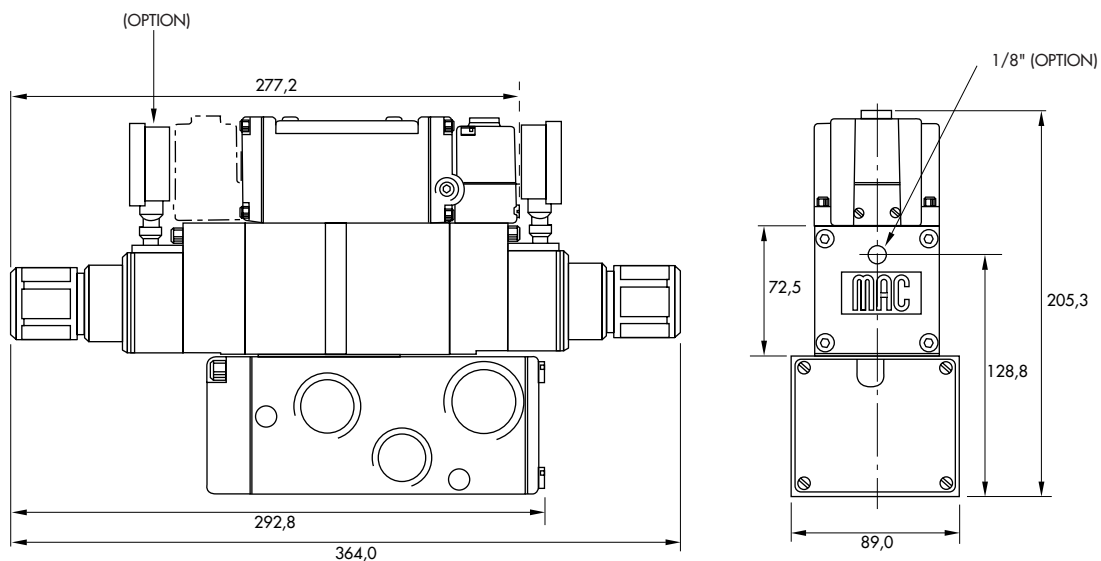
- Pressure regulator (less sandwich block) : PR65C-41AA (KNOB), PR65C-D1AA (SLOTTED STEM), PR65C-H1AA (SLOTTED STEM WITH LOCKNUT).
- Gauges : • Glycerine filled : N-62015-01
• Non filled : N-62016-01

Regulating range options : PR65C-XXXX

- Replace by B - 0 to 100 PSI
- Replace by C - 0 to 45 PSI

DIMENSIONS

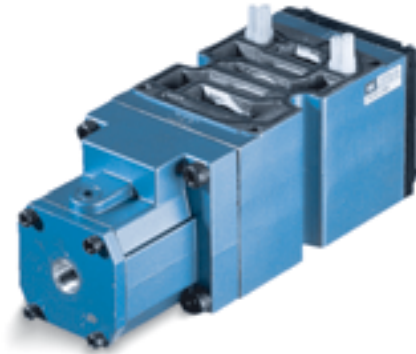
Dimensions shown are metric (mm)



Sandwich pressure regulator with air pilot adjust.

OPERATIONAL BENEFITS

1. Easy mounting : saves on installation costs in comparison with inline regulators.
2. Allows to have compact, all-included units.
3. Large orifice provides high flow.
4. Various functions available.
5. Simple, reliable and solid design.



PR82A
PR63D
PR65C

HOW TO ORDER

REGULATORS FOR "PLUG-IN" VALVES

Gauges	Single pressure Regulator A end Same regulated pressure to ports A and B	Single pressure Regulator B end Same regulated pressure to ports A and B	Dual pressure Regulator A end Regulated pressure to port B	Dual pressure Regulator B end Regulated pressure to port A	Dual pressure Dual regulator Two regulated pressures to ports A and B
No gauge	PR65C-2BAA	PR65C-2AAA	PR65C-2DAA	PR65C-2CAA	PR65C-2EAA
Glycerine filled gauge on regulator(s)	PR65C-2BBA	PR65C-2ABA	PR65C-2DBA	PR65C-2CBA	PR65C-2EDA
Glycerine filled gauge opposite to regulator	PR65C-2BCA	PR65C-2ACA	PR65C-2DCA	PR65C-2CCA	-----
Non-filled gauge on regulator(s)	PR65C-2BFA	PR65C-2AFA	PR65C-2DFA	PR65C-2CFA	PR65C-2EHA
Non-filled gauge opposite to regulator	PR65C-2BGA	PR65C-2AGA	PR65C-2DGA	PR65C-2CGA	-----

Note : above models are coded for use with double solenoid plug-in valves.

REGULATORS FOR "NON PLUG-IN" AND REMOTE AIR VALVES

Gauges	Single pressure Regulator A end Same regulated pressure to ports A and B	Single pressure Regulator B end Same regulated pressure to ports A and B	Dual pressure Regulator A end Regulated pressure to port B	Dual pressure Regulator B end Regulated pressure to port A	Dual pressure Dual regulator Two regulated pressures to ports A and B
No gauge	PR65C-3BAA	PR65C-3AAA	PR65C-3DAA	PR65C-3CAA	PR65C-3EAA
Glycerine filled gauge on regulator(s)	PR65C-3BBA	PR65C-3ABA	PR65C-3DBA	PR65C-3CBA	PR65C-3EDA
Glycerine filled gauge opposite to regulator	PR65C-3BCA	PR65C-3ACA	PR65C-3DCA	PR65C-3CCA	-----
Non-filled gauge on regulator(s)	PR65C-3BFA	PR65C-3AFA	PR65C-3DFA	PR65C-3CFA	PR65C-3EHA
Non-filled gauge opposite to regulator	PR65C-3BGA	PR65C-3AGA	PR65C-3DGA	PR65C-3CGA	-----

PRA1A
PRA2D
PRA3C

PLUG-IN OPTIONS

PR65C-xxxx

- Replace by 1 for single solenoid plug-in.

PR125A
PR250B

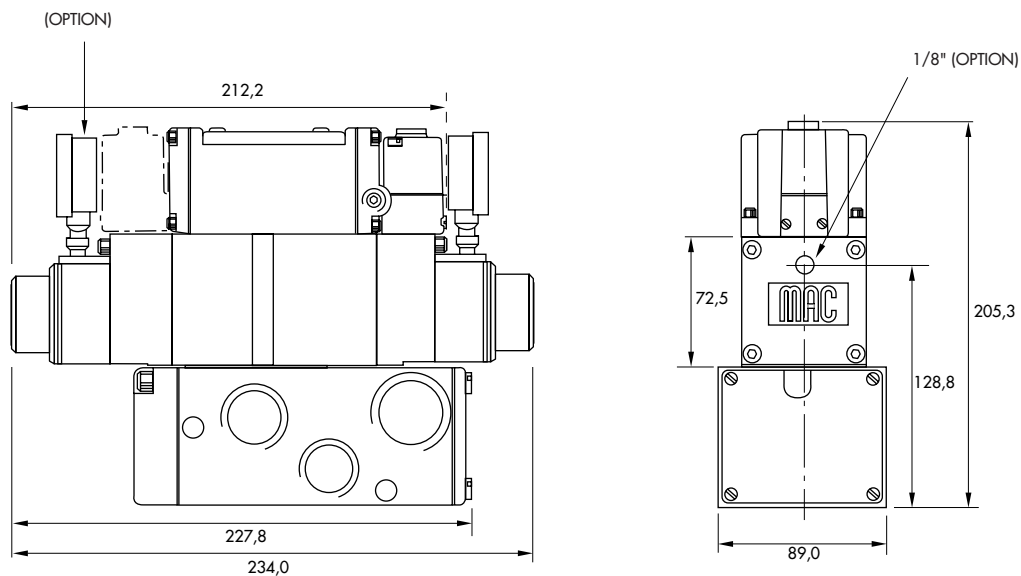
TECHNICAL DATA

Fluid :	Compressed air, inert gases
Pressure range :	0 to 150 PSI
Regulating range :	0 to 150 PSI
Lubrication :	Not required, if used select a medium aniline point lubricant (between 180°F to 210°F)
Filtration :	40 μ
Temperature range :	0°F to 120°F (-18°C to 50°C)
Flow (at 6 bar, ΔP=1bar) :	(4.0 C _v)

- Spare parts :
- Pressure regulator (less sandwich block) : PR65C-4AAA.
 - Gauges :
 - Glycerine filled : N-62015-01
 - Non filled : N-62016-01

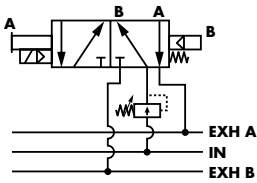
DIMENSIONS

Dimensions shown are metric (mm)



Manual adjust

Single regulator
Single pressure

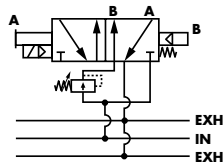


P. 305

P. 309

P. 313

Single regulator
Dual pressure

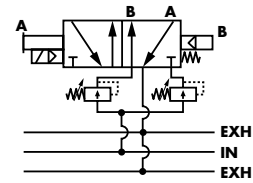


P. 305

P. 309

P. 313

Dual regulator
Dual pressure

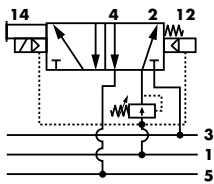


P. 305

P. 309

P. 313

Single regulator
Single pressure

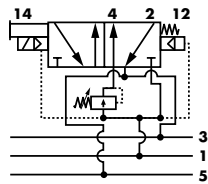


P. 317

P. 321

P. 325

Single regulator
Dual pressure

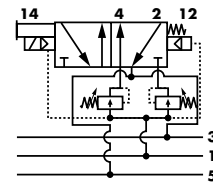


P. 317

P. 321

P. 325

Dual regulator
Dual pressure

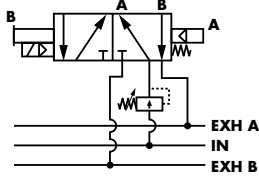


P. 317

P. 321

P. 325

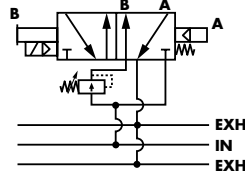
Single regulator
Single pressure



P. 329

P. 333

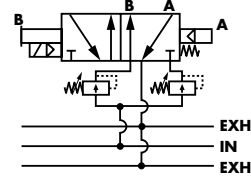
Single regulator
Dual pressure



P. 329

P. 333

Dual regulator
Dual pressure



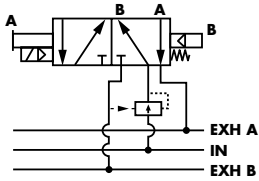
P. 329

P. 333

Air adjust

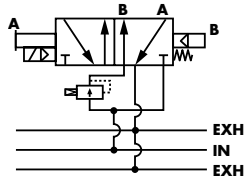
Series

Single regulator
Single pressure



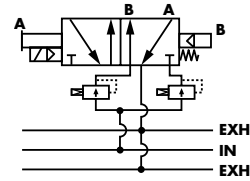
- P. 307
- P. 311
- P. 315

Single regulator
Dual pressure



- P. 307
- P. 311
- P. 315

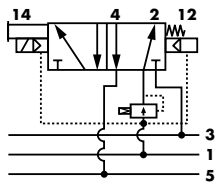
Dual regulator
Dual pressure



- P. 307
- P. 311
- P. 315

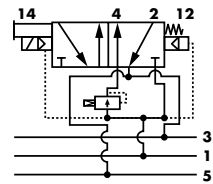
PR82A
PR63D
PR65C

Single regulator
Single pressure



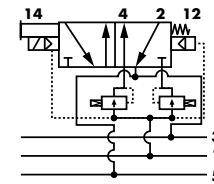
- P. 319
- P. 323
- P. 327

Single regulator
Dual pressure



- P. 319
- P. 323
- P. 327

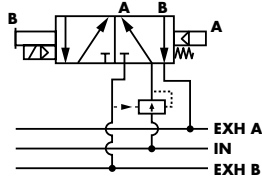
Dual regulator
Dual pressure



- P. 319
- P. 323
- P. 327

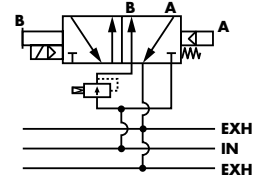
PRA1A
PRA2D
PRA3C

Single regulator
Single pressure



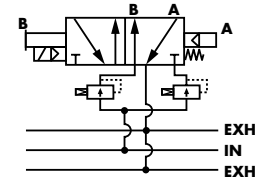
- P. 331
- P. 335

Single regulator
Dual pressure



- P. 331
- P. 335

Dual regulator
Dual pressure



- P. 331
- P. 335

PR125A
PR250B