

Sandwich pressure regulator with manual adjust locking knob.

OPERATIONAL BENEFITS

1. Easy mounting : saves on installation costs in comparison with inline regulators.
2. Allows to have compact, all-included units.
3. Large orifice provides high flow.
4. Various functions available.
5. Simple, reliable and solid design.



PR82A
PR63D
PR65C

HOW TO ORDER

REGULATORS FOR "PLUG-IN" VALVES

Gauges	Single pressure Regulator A end Same regulated pressure to ports A and B	Dual pressure Regulator A end Regulated pressure to port A *	Dual pressure Regulator B end Regulated pressure to port B *	Dual pressure Dual regulator Two regulated pressures to ports A and B *
No gauge	PR82A-GADA	PR82A-GCDA	PR82A-GBDA	PR82A-GDDA
Gauge parallel to regulator	PR82A-GACA	PR82A-GCCA	PR82A-GBCA	PR82A-GDCA
Gauge perpendicular to regulator	PR82A-GABA	PR82A-GCBA	PR82A-GBBA	PR82A-GDBA

REGULATORS FOR "NON PLUG-IN" AND REMOTE AIR VALVES

Gauges	Single pressure Regulator A end Same regulated pressure to ports A and B	Dual pressure Regulator A end Regulated pressure to port A *	Dual pressure Regulator B end Regulated pressure to port B *	Dual pressure Dual regulator Two regulated pressures to ports A and B *
No gauge	PR82A-HADA	PR82A-HCDA	PR82A-HBDA	PR82A-HDDA
Gauge parallel to regulator	PR82A-HACA	PR82A-HCCA	PR82A-HBCA	PR82A-HDCA
Gauge perpendicular to regulator	PR82A-HABA	PR82A-HCBA	PR82A-HBBA	PR82A-HDBA

PRA1A
PRA2D
PRA3C

Note : regulating range for above models is 0-120 PSI. For other ranges see technical data page.

* To be used with dual pressure valves.

ADJUSTMENT OPTIONS

PR82A-**xxxx**

- Replace by A for "plug-in" with slotted stem adjustment.
- Replace by B for "non plug-in" with slotted stem adjustment.
- Replace by K for "plug-in" with locking slotted stem adjustment.
- Replace by L for "non plug-in" with locking slotted stem adjustment.

** **SELECTOR OPTIONS** selects pressure to inlet of adjacent valve.

PR82A-**xxxx**

- Replace by S for dual regulators.
- Replace by T for regulator on "B" end with by-pass on "A" end.

** This option must be used with a single pressure valve and selector manifold base.

PR125A
PR250B

TECHNICAL DATA

Fluid :	Compressed air, inert gases
Pressure range :	0 to 150 PSI
Regulating range :	0 to 120 PSI (other ranges see below)
Lubrication :	Not required, if used select a medium aniline point lubricant (between 180°F to 210°F)
Filtration :	40 μ
Temperature range :	0°F to 120°F (-18°C to 50°C)
Flow :	(1.08 C _v)

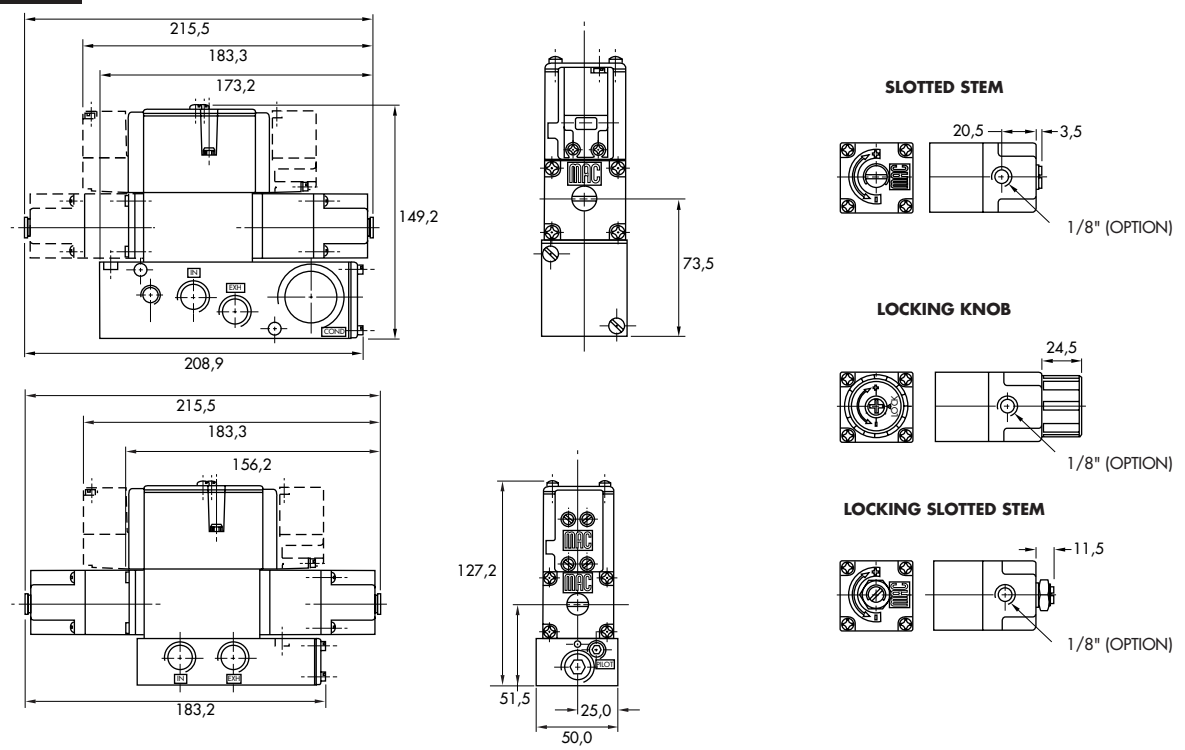
- Spare parts :
- Pressure regulator (less sandwich block) : PR82A-J0AA (KNOB), PR82A-C0AA (SLOTTED STEM), PR82A-M0AA (LOCKING SLOTTED STEM).
 - Gauges : N-82016-01 (0-120 PSI perpendicular)
 N-82016-02 (0-120 PSI parallel)
 N-82016-03 (0-80 PSI perpendicular)
 N-82016-04 (0-80 PSI parallel)
 N-82016-05 (0-30 PSI perpendicular)
 N-82016-06 (0-30 PSI parallel)

Regulating range options : PR82A-XXXX

- Replace by B - 0 to 80 PSI
- Replace by C - 0 to 30 PSI
- Replace by D - 0 to 120 PSI on "A" end
 - 0 to 80 PSI on "B" end
- Replace by E - 0 to 120 PSI on "B" end
 - 0 to 80 PSI on "A" end
- Replace by F - 0 to 120 PSI on "A" end
 - 0 to 30 PSI on "B" end
- Replace by G - 0 to 120 PSI on "B" end
 - 0 to 30 PSI on "A" end
- Replace by H - 0 to 80 PSI on "A" end
 - 0 to 30 PSI on "B" end
- Replace by J - 0 to 80 PSI on "B" end
 - 0 to 30 PSI on "A" end

DIMENSIONS

Dimensions shown are metric (mm)



Sandwich pressure regulator with air pilot adjust.

OPERATIONAL BENEFITS

1. Easy mounting : saves on installation costs in comparison with inline regulators.
2. Allows to have compact, all-included units.
3. Large orifice provides high flow.
4. Various functions available.
5. Simple, reliable and solid design.



PR82A
PR63D
PR65C

HOW TO ORDER

REGULATORS FOR "PLUG-IN" VALVES

Gauges	Single pressure Regulator A end Same regulated pressure to ports A and B	Dual pressure Regulator A end Regulated pressure to port A *	Dual pressure Regulator B end Regulated pressure to port B *	Dual pressure Dual regulator Two regulated pressures to ports A and B *
No gauge	PR82A-DADA	PR82A-DCDA	PR82A-DBDA	PR82A-DDDA
Gauge parallel to regulator	PR82A-DACA	PR82A-DCCA	PR82A-DBCA	PR82A-DDCA
Gauge perpendicular to regulator	PR82A-DABA	PR82A-DCBA	PR82A-DBBA	PR82A-DDBA

REGULATORS FOR "NON PLUG-IN" AND REMOTE AIR VALVES

Gauges	Single pressure Regulator A end Same regulated pressure to ports A and B	Dual pressure Regulator A end Regulated pressure to port A *	Dual pressure Regulator B end Regulated pressure to port B *	Dual pressure Dual regulator Two regulated pressures to ports A and B *
No gauge	PR82A-EADA	PR82A-ECDA	PR82A-EBDA	PR82A-EDDA
Gauge parallel to regulator	PR82A-EACA	PR82A-ECCA	PR82A-EBCA	PR82A-EDCA
Gauge perpendicular to regulator	PR82A-EABA	PR82A-ECBA	PR82A-EBBA	PR82A-EDBA

* To be used with dual pressure valves.

PRA1A
PRA2D
PRA3C

PR125A
PR250B

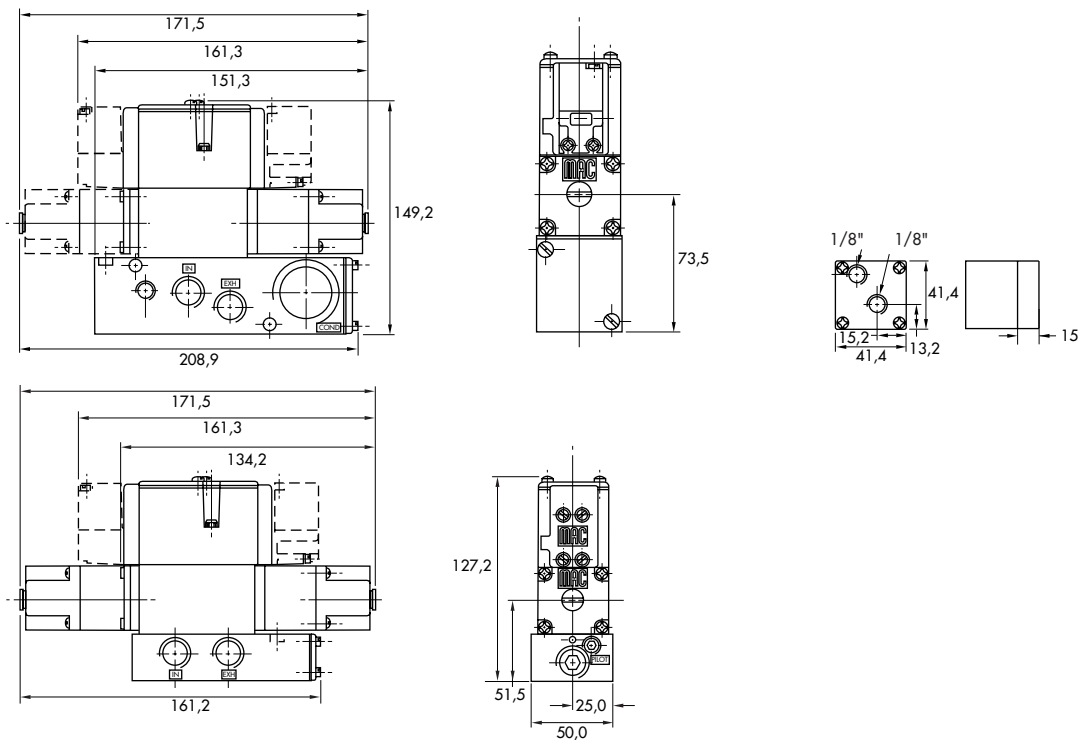
TECHNICAL DATA

Fluid :	Compressed air, inert gases
Pressure range :	0 to 150 PSI
Regulating range :	0 to 120 PSI
Lubrication :	Not required, if used select a medium aniline point lubricant (between 180°F to 210°F)
Filtration :	40 μ
Temperature range :	0°F to 120°F (-18°C to 50°C)
Flow :	(1.08 C _v)

- Spare parts :
- Pressure regulator (less sandwich block) : PR82A-FOAA.
 - Gauges : N-82016-01 (0-120 PSI perpendicular)
N-82016-02 (0-120 PSI parallel)

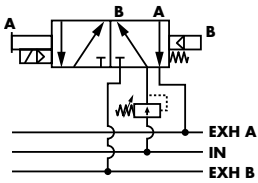
DIMENSIONS

Dimensions shown are metric (mm)



Manual adjust

Single regulator
Single pressure

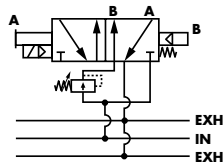


P. 305

P. 309

P. 313

Single regulator
Dual pressure

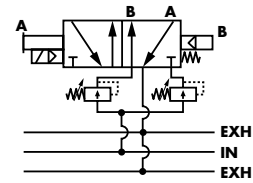


P. 305

P. 309

P. 313

Dual regulator
Dual pressure

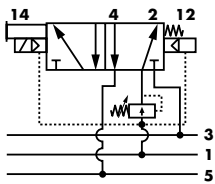


P. 305

P. 309

P. 313

Single regulator
Single pressure

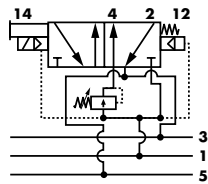


P. 317

P. 321

P. 325

Single regulator
Dual pressure

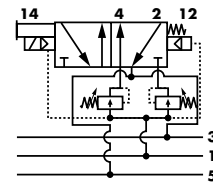


P. 317

P. 321

P. 325

Dual regulator
Dual pressure

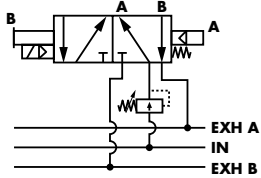


P. 317

P. 321

P. 325

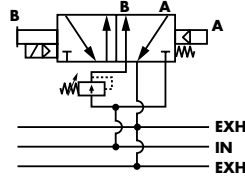
Single regulator
Single pressure



P. 329

P. 333

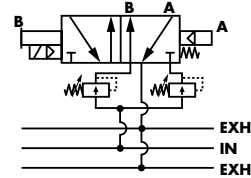
Single regulator
Dual pressure



P. 329

P. 333

Dual regulator
Dual pressure



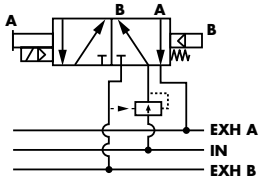
P. 329

P. 333

Air adjust

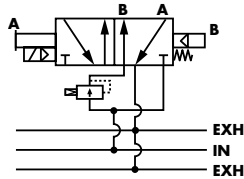
Series

Single regulator
Single pressure



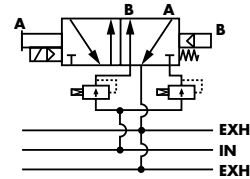
- P. 307
- P. 311
- P. 315

Single regulator
Dual pressure



- P. 307
- P. 311
- P. 315

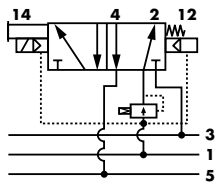
Dual regulator
Dual pressure



- P. 307
- P. 311
- P. 315

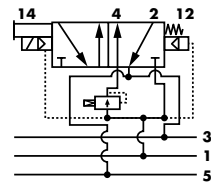
PR82A
PR63D
PR65C

Single regulator
Single pressure



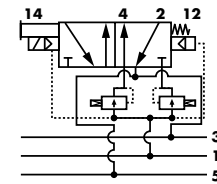
- P. 319
- P. 323
- P. 327

Single regulator
Dual pressure



- P. 319
- P. 323
- P. 327

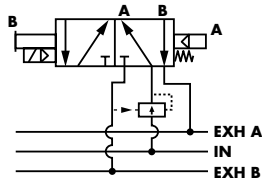
Dual regulator
Dual pressure



- P. 319
- P. 323
- P. 327

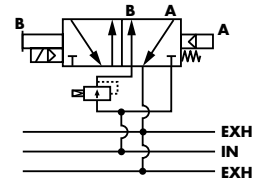
PRA1A
PRA2D
PRA3C

Single regulator
Single pressure



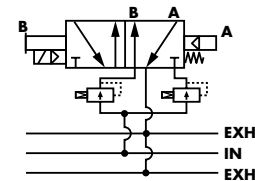
- P. 331
- P. 335

Single regulator
Dual pressure



- P. 331
- P. 335

Dual regulator
Dual pressure



- P. 331
- P. 335

PR125A
PR250B