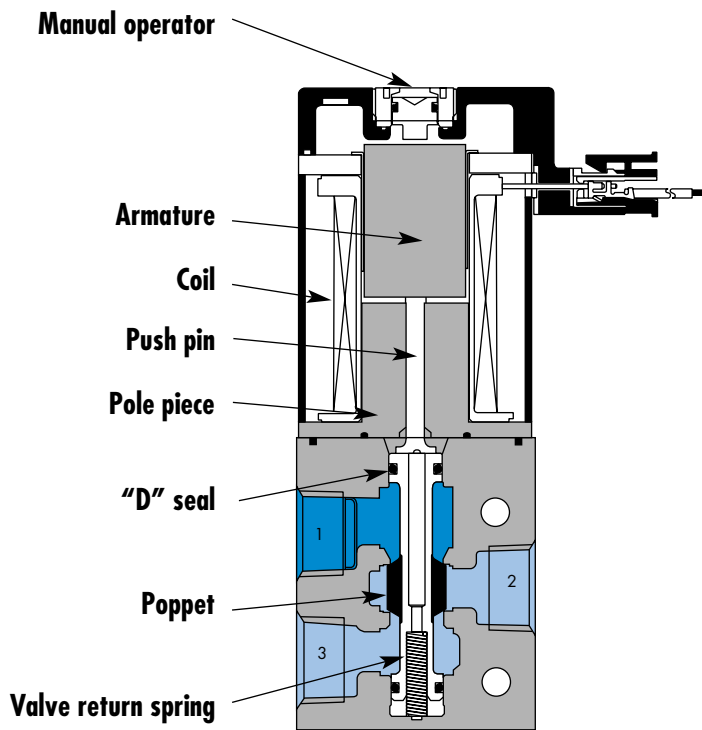


Circuit bar mounting

non plug-in cylinder ports in valve	non plug-in cylinder ports in base	non plug-in cylinder ports in base with Pr. Reg.	non plug-in add-on style cylinder ports in base	non plug-in add-a-unit stations	plug-in	plug-in with Pr. Reg.	add-on style plug-in
add-on style plug in with Pr. Reg.	plug-in add-a-unit stations	plug-in add-a-unit stations with Pr. Reg.					



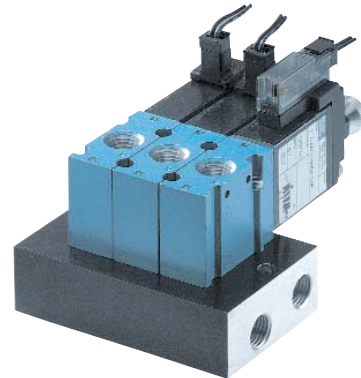
SERIES FEATURES

- Balanced poppet equals consistent high shifting forces.
- Valve shifting forces are consistent and independent of pressure fluctuations.
- High solenoid and return spring forces ensure high speed and precise repeatability.
- Built-in wear compensation - valve stroke is shorter than solenoid stroke.
- Constant high flow maintained throughout the pressure range.
- Exhaust contaminants are isolated from the solenoid.
- Full flow exhaust.
- Universal porting - 6 functions in one valve.

Function	Port size (Inlet & Exhaust)	Flow (Max)	Circuit bar mounting	Profile
3/2 NO-NC	1/4" - 3/8"	0.5C_v	non plug-in cylinder ports in valve	26 mm 38 mm

OPERATIONAL BENEFITS

1. Direct solenoid operated valve.
2. Balanced poppet, immune to variations of pressure.
3. Short stroke with high flow.
4. The patented solenoid develops high shifting forces.
5. Powerful return spring.
6. Manual operator standard on all valves.



HOW TO ORDER

37A-xxx-Hxxx-xxx

HOW TO ORDER VALVE FOR CIRCUIT BAR MOUNTING

Valve port size	Universal valve	NC only valve
1/8" NPTF	<input type="radio"/> 37A-EGO-Hxxx-xxx	<input type="radio"/> 37A-FGO-Hxxx-xxx
1/4" NPTF	<input type="radio"/> 37A-EHO-Hxxx-xxx	<input type="radio"/> 37A-FHO-Hxxx-xxx

SOLENOID OPERATOR >

H **XX X- X XX**

XX Voltage	X Wire length	X Manual operator	XX Electrical connection
<input type="radio"/> DC 24VDC (1.8 W)	<input type="radio"/> A 18"	<input type="radio"/> 1 Non-locking	<input type="radio"/> MA Plug-in wire assy
<input type="radio"/> DB 24VDC (2.4 W)	<input type="radio"/> C 36"		<input type="radio"/> MC Plug-in wire assy with light
<input type="radio"/> DA 24VDC (5.2 W)	<input type="radio"/> x Other Options		<input type="radio"/> BA Flying leads
<input type="radio"/> AA 120VAC (must use with rectified connector)			<input type="radio"/> BC Flying leads with light
<input type="radio"/> xx Other Options			<input type="radio"/> HA Plug-in connector with rectifier and light
			<input type="radio"/> xx Other Options

EBM37A-xxxxx-xx

HOW TO ORDER CIRCUIT BAR (REGULATORS ORDERED SEPARATELY)**

Port size COMMON INLET & EXHAUST	Without regulators (20mm)	With regulators (20mm)
26mm Profile 1/4" NPTF	<input type="radio"/> EBM37A-01CAK-xx	-
38mm Profile 3/8" NPTF	-	<input type="radio"/> EBM37A-01JAK-xx

Number of stations (03=3 stations)

Note : clic for valves mounted on base at the factory, add - 9 to the model number.

** Pressure Regulators :

PR37A-GOAx

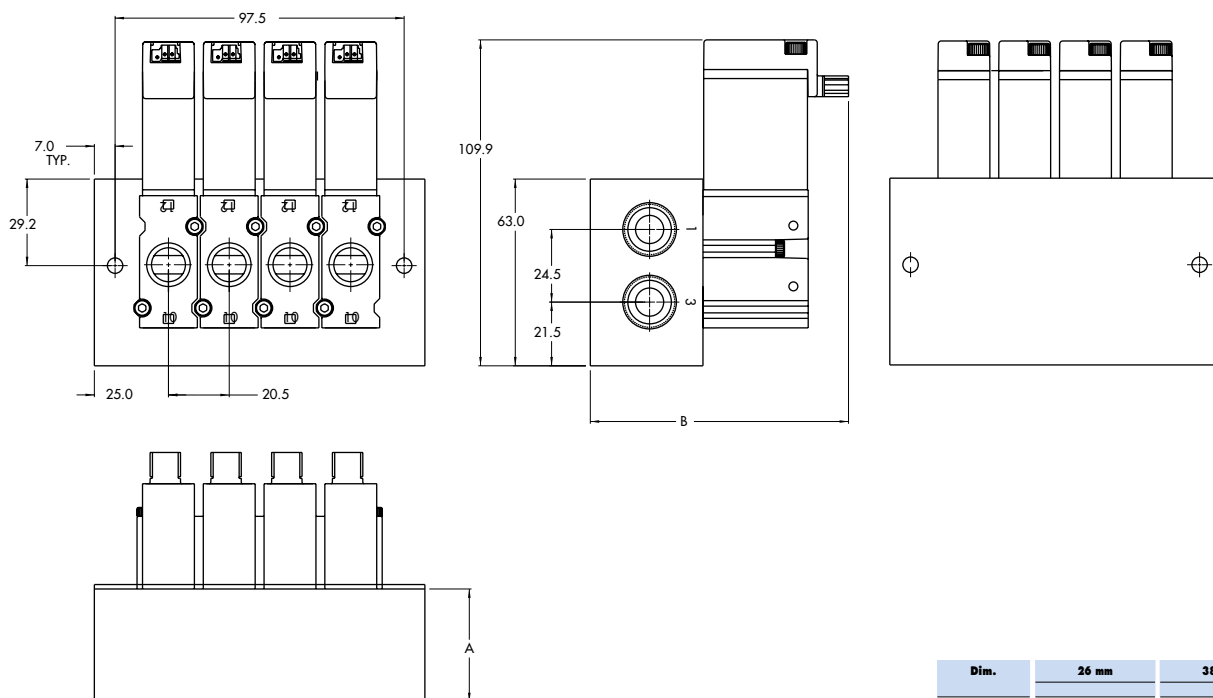
- X=A (0 to 120 PSI)
- X=B (0 to 80 PSI)
- X=C (0 to 30 PSI)

**TECHNICAL
D A T A**

Fluid :	Compressed air, vacuum, inert gases
Pressure range :	Vacuum to 120 PSI
Lubrication :	Not required, if used select a medium aniline point lubricant (between 180°F and 210°F)
Filtration :	40 µ
Temperature range :	0°F to 120°F (-18°C to 50°C)
Orifice :	4.3 mm
Flow (at 6 bar, ΔP=1bar) :	5.2 W : 0.50C _v , 2.4 W : 0.25C _v , 1.8 W : 0.15C _v
Coil :	General purpose class A, continuous duty, encapsulated
Voltage range :	-15% to +10% of nominal voltage
Power :	5.2 W - 2.4 W - 1.8 W - 1.0 W
Response times :	Energize : 17.0 ms
(with 5.2 W coil)	De-energize : 6.0 ms

- Note : • Valve and coil are not interchangeable.
- Spare parts : • Seal between valve and bar : 16630. • Mounting screw (x2) : 35043. • Blanking plate : M-37002.
• Regulator blanking plate : R-47003.
- Options : • Isolation of inlet and/or exhaust. Special bar. Consult factory. • BSPP Threads.

DIMENSIONS

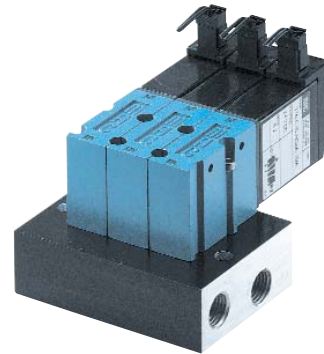


Dim.	26 mm	38 mm
"A"	26.0	38.0
"B"	75.1	87.1

Function	Port size	Flow [Max]	Circuit bar mounting	Profile
3/2 NO-NC	1/8" - 1/4" 6 mm tube receptacle	0.5C_v	non plug-in cylinder ports in base	26 mm

OPERATIONAL BENEFITS

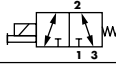
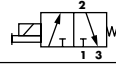
1. Direct solenoid operated valve.
2. Balanced poppet, immune to variations of pressure.
3. Short stroke with high flow.
4. The patented solenoid develops high shifting forces.
5. Powerful return spring.
6. Manual operator standard on all valves.



HOW TO ORDER

37A-xxx-Hxxx-xxx

HOW TO ORDER VALVE FOR CIRCUIT BAR MOUNTING

Port size (see base)	Universal valve	NC only valve
		
Valve less base	<input type="radio"/> 37A-C10-Hxxx-xxx	<input type="radio"/> 37A-D10-Hxxx-xxx

SOLENOID OPERATOR >

H **XX X- X XX**

XX Voltage	X Wire length	X Manual operator	XX Electrical connection
<input type="radio"/> DC 24VDC (1.8 W)	<input type="radio"/> A 18"	<input type="radio"/> 1 Non-locking	<input type="radio"/> MA Plug-in wire assy
<input type="radio"/> DB 24VDC (2.4 W)	<input type="radio"/> C 36"		<input type="radio"/> MC Plug-in wire assy with light
<input type="radio"/> DA 24VDC (5.2 W)	<input type="radio"/> X Other Options		<input type="radio"/> BA Flying leads
<input type="radio"/> AA 120VAC (must use with rectified connector)			<input type="radio"/> BC Flying leads with light
<input type="radio"/> xx Other Options			<input type="radio"/> HA Plug-in connector with rectifier and light
			<input type="radio"/> xx Other Options

HOW TO ORDER CIRCUIT BAR

EBM37A-00xxx-xx

Port size	Side cylinder ports (18 mm)	Bottom cylinder ports (18 mm)
1/8" NPTF	<input type="radio"/> EBM37A-00AAA-xx	<input type="radio"/> EBM37A-00BAA-xx
1/4" NPTF	<input type="radio"/> EBM37A-00AAB-xx	<input type="radio"/> EBM37A-00BAB-xx
6 mm tube receptacle	<input type="radio"/> EBM37A-00AAG-xx	<input type="radio"/> EBM37A-00BAG-xx

Number of stations (03=3 stations)

Note: clic for valves mounted on base at the factory, add - 9 to the model number.

**TECHNICAL
DATA**

Fluid :	Compressed air, vacuum, inert gases
Pressure range :	Vacuum to 120 PSI
Lubrication :	Not required, if used select a medium aniline point lubricant (between 180°F and 210°F)
Filtration :	40 µ
Temperature range :	0°F to 120°F (-18°C to 50°C)
Orifice :	4.3 mm
Flow (at 6 bar, ΔP=1bar) :	5.2 W : 0.50C _v , 2.4 W : 0.25C _v , 1.8 W : 0.15C _v
Coil :	General purpose class A, continuous duty, encapsulated
Voltage range :	-15% to +10% of nominal voltage
Power :	5.2 W - 2.4 W - 1.8 W - 1.0 W
Response times :	Energize : 17.0 ms
(with 5.2 W coil)	De-energize : 6.0 ms

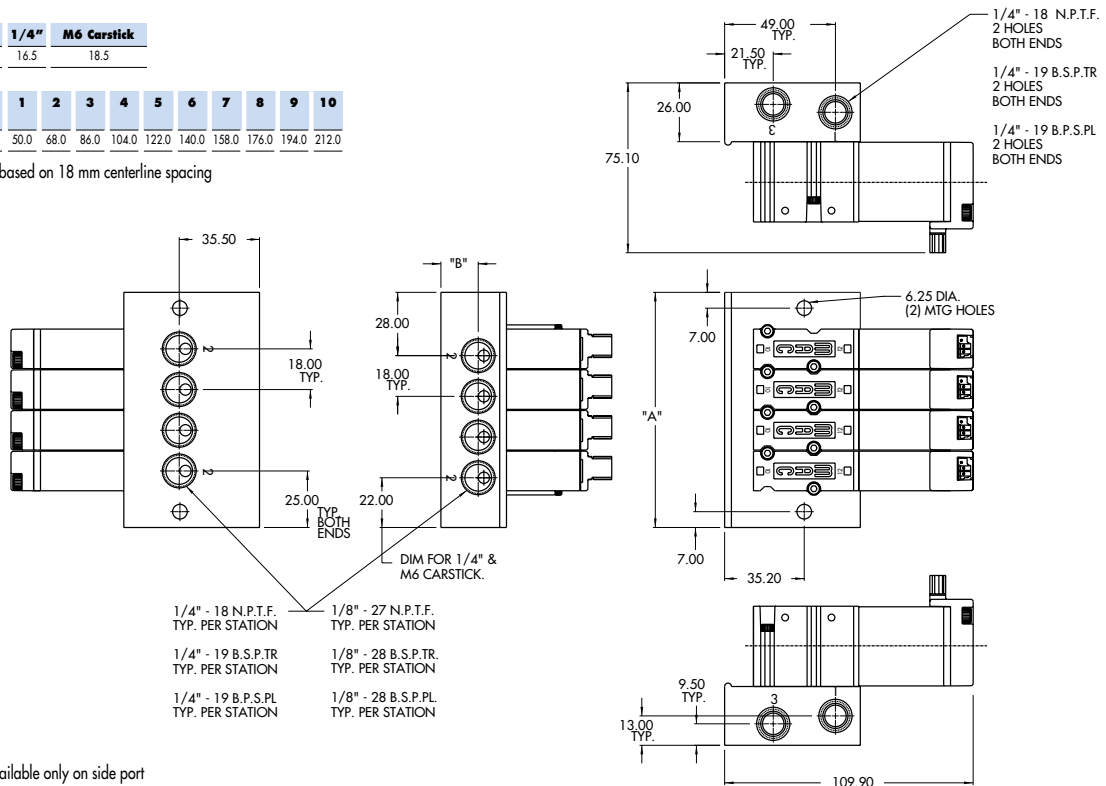
- Note : • Valve and coil are not interchangeable.
- Spare parts : • Seal between valve and bar : 16630. • Mounting screw (x2) : 35043. • Blanking plate : M-37001.
- Options : • Isolation of inlet and/or exhaust. Special bar. Consult factory. • BSPP Threads.

DIMENSIONS

Dim.	1/4"	M6 Carstick
"B"	16.5	18.5

Number of stations	1	2	3	4	5	6	7	8	9	10
"A"	50.0	68.0	86.0	104.0	122.0	140.0	158.0	176.0	194.0	212.0

Dimensions are based on 18 mm centerline spacing

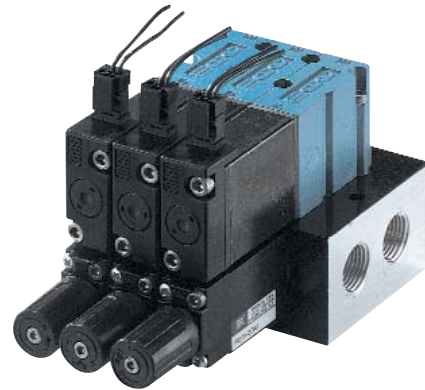


* M6 Carstick available only on side port

Function	Port size	Flow [Max]	Circuit bar mounting	Profile
3/2 NO-NC	1/8" - 1/4" 6 mm tube receptacle	0.5C_v	non plug-in cylinder ports in base with Pr. Reg.	38 mm

OPERATIONAL BENEFITS

1. Direct solenoid operated valve.
2. Balanced poppet, immune to variations of pressure.
3. Short stroke with high flow.
4. The patented solenoid develops high shifting forces.
5. Powerful return spring.
6. Manual operator standard on all valves.



Reset

HOW TO ORDER

37A-xxx-Hxxx-xxx

HOW TO ORDER VALVE FOR CIRCUIT BAR MOUNTING

Port size (see base)	Universal valve	NC only valve
Valve less base	<input type="radio"/> 37A-C1O-Hxxx-xxx	<input type="radio"/> 37A-D1O-Hxxx-xxx

SOLENOID OPERATOR >

H XX X- X XX'

Voltage		Wire length		Manual operator		Electrical connection	
<input type="radio"/> DC	24VDC (1.8 W)	<input type="radio"/> A	18"	<input type="radio"/> 1	Non-locking	<input type="radio"/> MA	Plug-in wire assy
<input type="radio"/> DB	24VDC (2.4 W)	<input type="radio"/> C	36"			<input type="radio"/> MC	Plug-in wire assy with light
<input type="radio"/> DA	24VDC (5.2 W)	<input type="radio"/> x	Other Options			<input type="radio"/> BA	Flying leads
<input type="radio"/> AA	120VAC (must use with rectified connector)					<input type="radio"/> BC	Flying leads with light
<input type="radio"/> xx	Other Options					<input type="radio"/> HA	Plug-in connector with rectifier and light
						<input type="radio"/> xx	Other Options

EBM37A-00xxx-xx

HOW TO ORDER CIRCUIT BAR (REGULATORS ORDERED SEPARATELY)**

Port size	Side cylinder ports (18 mm)	Bottom cylinder ports (18 mm)
1/8" NPTF	<input type="radio"/> EBM37A-00FAA-xx	<input type="radio"/> EBM37A-00GAA-xx
1/4" NPTF	<input type="radio"/> EBM37A-00FAB-xx	<input type="radio"/> EBM37A-00GAB-xx
6 mm tube receptacle	<input type="radio"/> EBM37A-00FAG-xx	<input type="radio"/> EBM37A-00GAG-xx

Number of stations (03=3 stations)

Note : clic for valves mounted on base at the factory, add - 9 to the model number.

** Pressure Regulators :

PR37A-GOAx

- X=A (0 to 120 PSI)
- X=B (0 to 80 PSI)
- X=C (0 to 30 PSI)

**TECHNICAL
DATA**

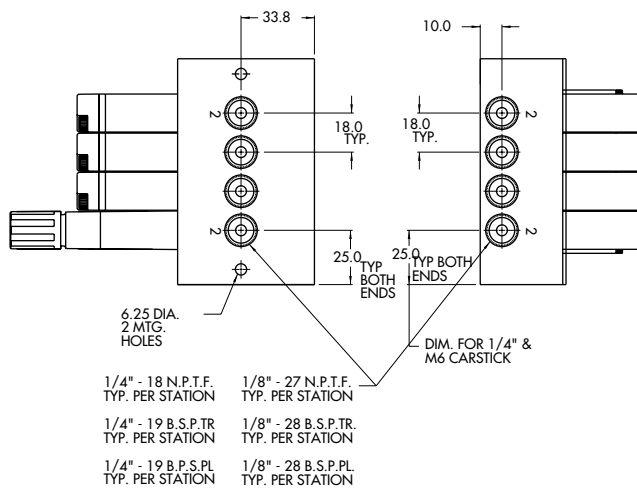
Fluid :	Compressed air, vacuum, inert gases
Pressure range :	Vacuum to 120 PSI
Lubrication :	Not required, if used select a medium aniline point lubricant (between 180°F and 210°F)
Filtration :	40 µ
Temperature range :	0°F to 120°F (-18°C to 50°C)
Orifice :	4.3 mm
Flow (at 6 bar, ΔP=1bar) :	5.2 W : 0.50C _v , 2.4 W : 0.25C _v , 1.8 W : 0.15C _v
Coil :	General purpose class A, continuous duty, encapsulated
Voltage range :	-15% to +10% of nominal voltage
Power :	5.2 W - 2.4 W - 1.8 W - 1.0 W
Response times :	Energize : 17.0 ms
(with 5.2 W coil)	De-energize : 6.0 ms

- Note : • Valve and coil are not interchangeable.
- Spare parts : • Seal between valve and bar : 16630. • Mounting screw (x2) : 35043. • Blanking plate : M-37001.
• Regulator blanking plate : R-47003.
- Options : • Isolation of inlet and/or exhaust. Special bar. Consult factory. • BSPP Threads.

DIMENSIONS

Number of stations	2	3	4	5	6	7	8	9	10	11
"A"	63.7	81.7	99.7	117.7	135.7	153.7	171.7	189.7	207.7	225.7

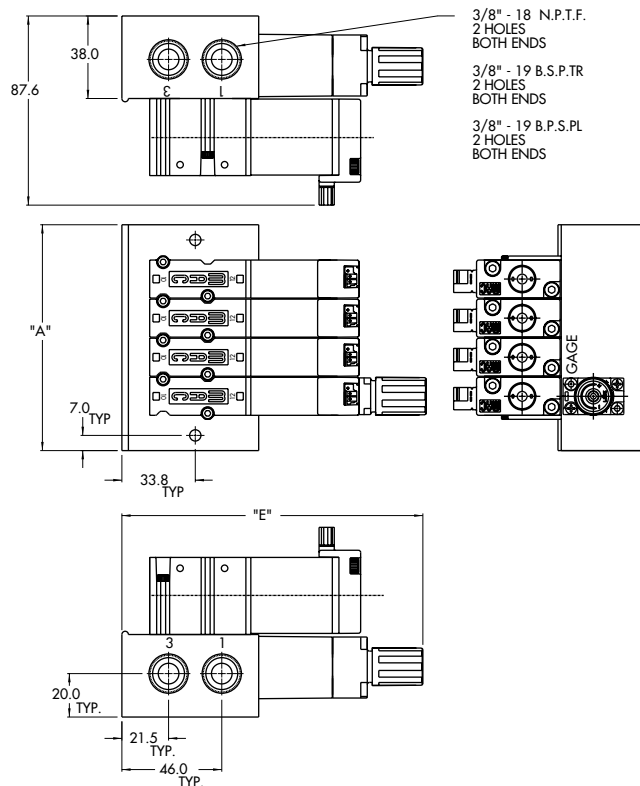
Dimensions are based on 18 mm centerline spacing



Dim.	Regulator with locking adjusting screw	Regulator with adjusting screw	Regulator with adjusting knob
"E"	135.8	131.8	139.6

* M6 Carstick available only on side port

Note: Bottom & side cylinder ports not available on the same station

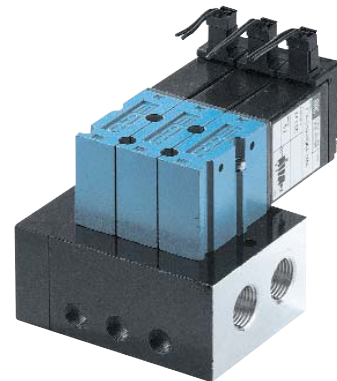


Function	Port size	Flow [Max]	Circuit bar mounting	Profile
3/2 NO-NC	1/8" - 1/4" 6 mm tube receptacle	0.5C_v	non plug-in add-on style cylinder ports in base	38 mm

OPERATIONAL BENEFITS

1. Direct solenoid operated valve.
2. Balanced poppet, immune to variations of pressure.
3. Short stroke with high flow.
4. The patented solenoid develops high shifting forces.
5. Powerful return spring.
6. Manual operator standard on all valves.

Reset



HOW TO ORDER

37A-xxx-Hxxx-xxx

HOW TO ORDER VALVE FOR CIRCUIT BAR MOUNTING

Port size (see base)	Universal valve	NC only valve
Valve less base	<input type="radio"/> 37A-C1O-Hxxx-xxx	<input type="radio"/> 37A-D1O-Hxxx-xxx

SOLENOID OPERATOR >

H **xx** X- X **xx**'

Voltage	Wire length	Manual operator	Electrical connection
<input type="radio"/> DC 24VDC (1.8 W)	<input type="radio"/> A 18"	<input type="radio"/> I Non-locking	<input type="radio"/> MA Plug-in wire Assy
<input type="radio"/> DB 24VDC (2.4 W)	<input type="radio"/> c 36"		<input type="radio"/> MC Plug-in wire Assy with light
<input type="radio"/> DA 24VDC (5.2 W)	<input type="radio"/> x Other Options		<input type="radio"/> BA Flying leads
<input type="radio"/> AA 120VAC (must use with rectified connector)			<input type="radio"/> BC Flying leads with light
<input type="radio"/> xx Other Options			<input type="radio"/> HA Plug-in connector with rectifier and light
			<input type="radio"/> xx Other Options

EBM37A-00xxx-xx

HOW TO ORDER CIRCUIT BAR

Port size	Side cylinder ports (18 mm)	Bottom cylinder ports (18 mm)
1/8" NPTF	<input type="radio"/> EBM37A-00DBA-xx	<input type="radio"/> EBM37A-00EBA-xx
1/4" NPTF	<input type="radio"/> EBM37A-00DBB-xx	<input type="radio"/> EBM37A-00EBB-xx
6 mm tube receptacle	<input type="radio"/> EBM37A-00DBG-xx	<input type="radio"/> EBM37A-00EBG-xx

Number of stations (03=3 stations)

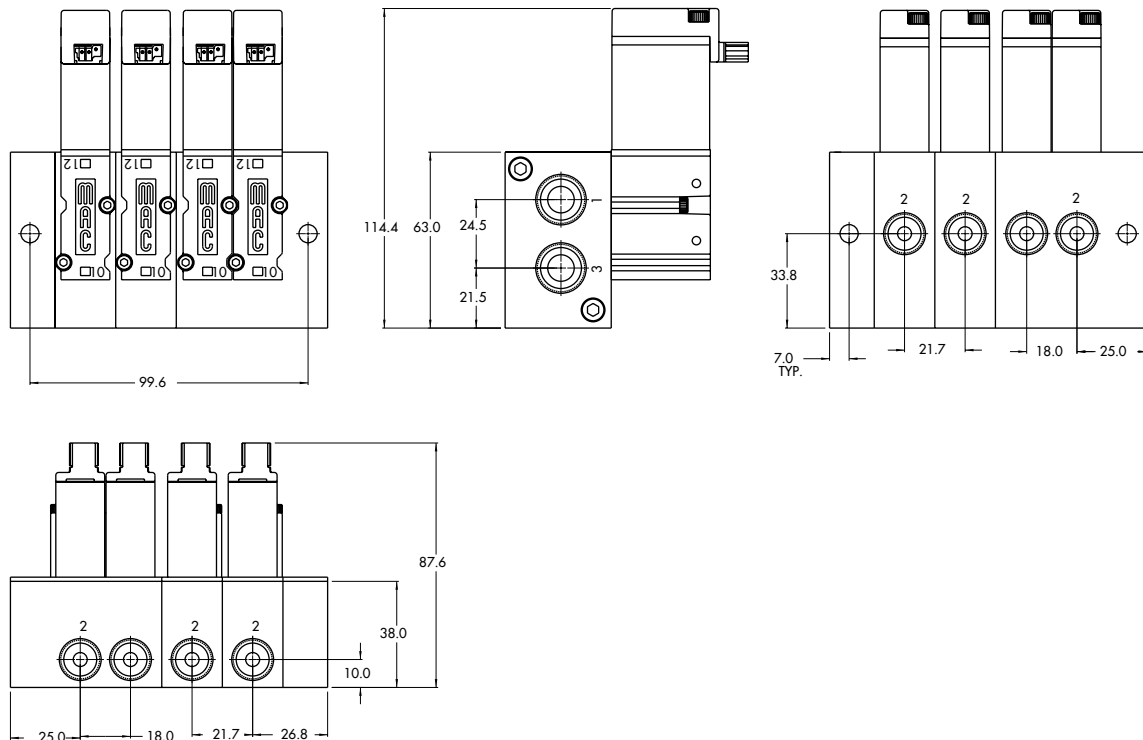
Note: clic for valves mounted on base at the factory, add - 9 to the model number.
add-a-unit stations may be added to above bars. Clic here for model numbers.

**TECHNICAL
DATA**

Fluid :	Compressed air, vacuum, inert gases
Pressure range :	Vacuum to 120 PSI
Lubrication :	Not required, if used select a medium aniline point lubricant (between 180°F and 210°F)
Filtration :	40 µ
Temperature range :	0°F to 120°F (-18°C to 50°C)
Orifice :	4.3 mm
Flow (at 6 bar, ΔP=1bar) :	5.2 W : 0.50C _v , 2.4 W : 0.25C _v , 1.8 W : 0.15C _v
Coil :	General purpose class A, continuous duty, encapsulated
Voltage range :	-15% to +10% of nominal voltage
Power :	5.2 W - 2.4 W - 1.8 W - 1.0 W
Response times :	Energize : 17.0 ms
(with 5.2 W coil)	De-energize : 6.0 ms

- Note : • Valve and coil are not interchangeable.
- Spare parts : • Seal between valve and bar : 16630. • Mounting screw (x2) : 35043. • Blanking plate : M-37001. • End plate Kit : M-37005-0
- Options : • Isolation of inlet and/or exhaust. Special bar. Consult factory. • BSPP Threads.

DIMENSIONS

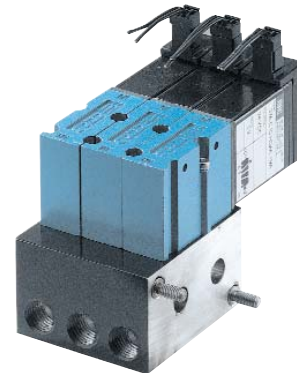


Note: Bottom & side cylinder ports not available on the same station

Function	Port size	Flow [Max]	Circuit bar mounting	Profile
3/2 NO-NC	1/8" - 1/4" 6 mm tube receptacle	0.5C_v	non plug-in odd-a-unit stations	38 mm

OPERATIONAL BENEFITS

1. Direct solenoid operated valve.
2. Balanced poppet, immune to variations of pressure.
3. Short stroke with high flow.
4. The patented solenoid develops high shifting forces.
5. Powerful return spring.
6. Manual operator standard on all valves.



Reset

HOW TO ORDER

37A-xxx-Hxxx-xxx

HOW TO ORDER VALVE FOR CIRCUIT BAR MOUNTING

Port size (see base)	Universal valve	NC only valve
Valve less base	<input type="radio"/> 37A-C1O-Hxxx-xxx	<input type="radio"/> 37A-D1O-Hxxx-xxx

SOLENOID OPERATOR >

H **xx x-x xx'**

Voltage	Wire length	Manual operator	Electrical connection
<input type="radio"/> DC 24VDC (1.8 W)	<input type="radio"/> A 18"	<input type="radio"/> I Non-locking	<input type="radio"/> MA Plug-in wire Assy
<input type="radio"/> DB 24VDC (2.4 W)	<input type="radio"/> C 36"		<input type="radio"/> MC Plug-in wire Assy with light
<input type="radio"/> DA 24VDC (5.2 W)	<input type="radio"/> x Other Options		<input type="radio"/> BA Flying leads
<input type="radio"/> AA 120VAC (must use with rectified connector)			<input type="radio"/> BC Flying leads with light
<input type="radio"/> xx Other Options			<input type="radio"/> HA Plug-in connector with rectifier and light
			<input type="radio"/> xx Other Options

EBM37A-00xxx-xx

HOW TO ORDER CIRCUIT BAR

Port size	Side cylinder ports (18 mm)	Bottom cylinder ports (18 mm)
1/8" NPTF	<input type="radio"/> EBM37A-00DCA-xx	<input type="radio"/> EBM37A-00ECA-xx
1/4" NPTF	<input type="radio"/> EBM37A-00DCB-xx	<input type="radio"/> EBM37A-00ECB-xx
6 mm tube receptacle	<input type="radio"/> EBM37A-00DCG-xx	<input type="radio"/> EBM37A-00ECG-xx

Number of stations (01, 02, 03 or 04)

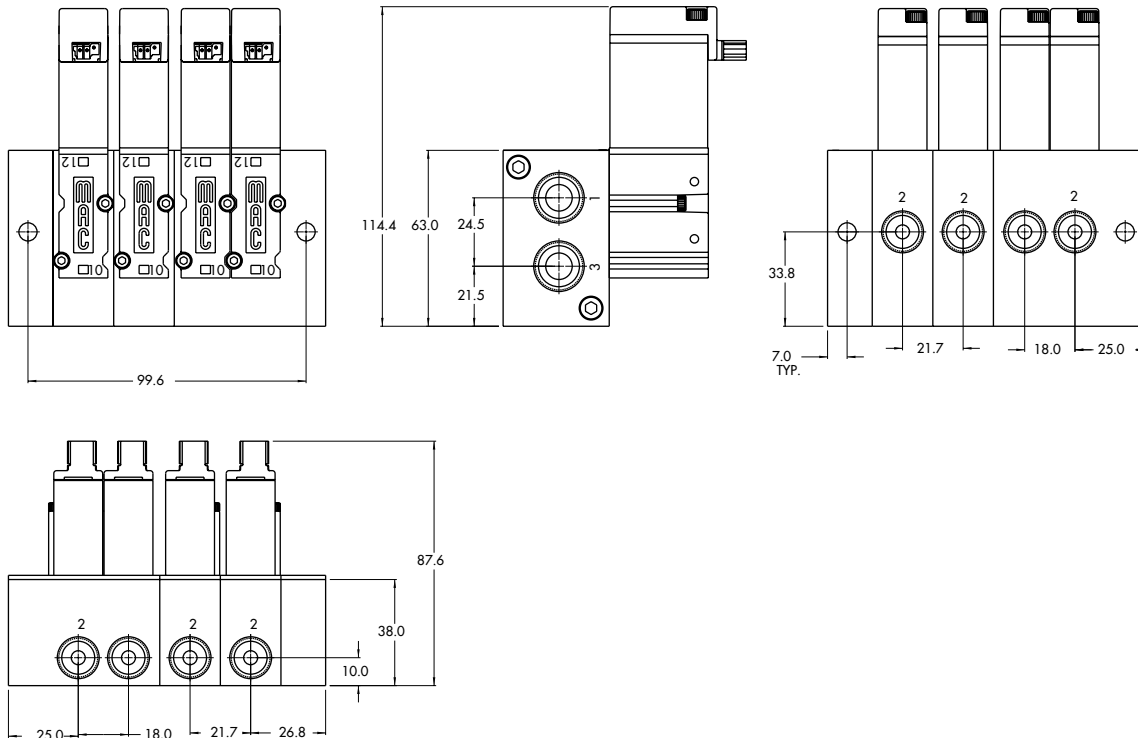
Note : clic for valves mounted on base at the factory, add - 9 to the model number.

**TECHNICAL
DATA**

Fluid :	Compressed air, vacuum, inert gases
Pressure range :	Vacuum to 120 PSI
Lubrication :	Not required, if used select a medium aniline point lubricant (between 180°F and 210°F)
Filtration :	40 μ
Temperature range :	0°F to 120°F (-18°C to 50°C)
Orifice :	4.3 mm
Flow (at 6 bar, $\Delta P=1$bar) :	5.2 W : 0.50C _v , 2.4 W : 0.25C _v , 1.8 W : 0.15C _v
Coil :	General purpose class A, continuous duty, encapsulated
Voltage range :	-15% to +10% of nominal voltage
Power :	5.2 W - 2.4 W - 1.8 W - 1.0 W
Response times :	Energize : 17.0 ms
(with 5.2 W coil)	De-energize : 6.0 ms

- Note :
 - Valve and coil are not interchangeable.
- Spare parts :
 - Seal between valve and bar : 16630. • Mounting screw (x2) : 35043. • Blanking plate : M-37001.
 - O-ring port seal (x2) : 17015-01. • Tie rod (x2) : 79007-01 (one station length)
- Options :
 - Isolation of inlet and/or exhaust. Special bar. Consult factory. • BSPP Threads.

DIMENSIONS



Note: Bottom & side cylinder ports not available on the same station

Function	Port size	Flow [Max]	Circuit bar mounting	Profile
3/2 NO-NC	1/8" - 1/4" 6 mm tube receptacle	0.5C_v	plug-in	32.5 mm

OPERATIONAL BENEFITS

1. Direct solenoid operated valve.
2. Balanced poppet, immune to variations of pressure.
3. Short stroke with high flow.
4. The patented solenoid develops high shifting forces.
5. Powerful return spring.
6. Manual operator standard on all valves.



Reset

HOW TO ORDER

37A-xxx-HxxP-xxx

HOW TO ORDER VALVE FOR CIRCUIT BAR MOUNTING

Port size (see base)	Universal valve	NC only valve
Valve less base	<input type="radio"/> 37A-C1O-HxxP-xxx	<input type="radio"/> 37A-D1O-HxxP-xxx

SOLENOID OPERATOR >

H XX P- X XX'

XX Voltage	X Manual operator	XX Electrical connection
<input type="radio"/> DC 24VDC (1.8 W)	<input type="radio"/> 1 Non-locking	<input type="radio"/> FA Plug-in
<input type="radio"/> DB 24VDC (2.4 W)		<input type="radio"/> FC Plug-in with light
<input type="radio"/> DA 24VDC (5.2 W)		<input type="radio"/> FE Plug-in with suppression diode
<input type="radio"/> AA 120VAC (Mod. No. required see below)		<input type="radio"/> FG Plug-in with suppression diode with LED light
<input type="radio"/> xx Other Options		<input type="radio"/> xx Other Options

HOW TO ORDER "PLUG-IN" CIRCUIT BAR**

ECD37A-xxxxx-xxxx

Port size	Spacing mm	Side cylinder ports	Bottom cylinder ports
1/8" NPTF	18	<input type="radio"/> ECD37A-00AAA-A0xx	<input type="radio"/> ECD37A-00BAA-A0xx
1/4" NPTF	18	<input type="radio"/> ECD37A-00AAB-A0xx	<input type="radio"/> ECD37A-00BAB-A0xx
6 mm tube receptacle	18	<input type="radio"/> ECD37A-00AAG-A0xx	<input type="radio"/> ECD37A-00BAG-A0xx
1/8" NPTF	30	<input type="radio"/> ECD37A-01AAA-C0xx	<input type="radio"/> ECD37A-01BAA-C0xx
1/4" NPTF	30	<input type="radio"/> ECD37A-01AAB-C0xx	<input type="radio"/> ECD37A-01BAB-C0xx
6 mm tube receptacle	30	<input type="radio"/> ECD37A-01AAG-C0xx	<input type="radio"/> ECD37A-01BAG-C0xx

Number of stations (03=3 stations)
 Note : clic for valves mounted on base at the factory, add - 9 to the model number.
 clic for multi-pin connector (9, 15 or 25).
 for AC voltage use mod. FWR2 after circuit bar model number.

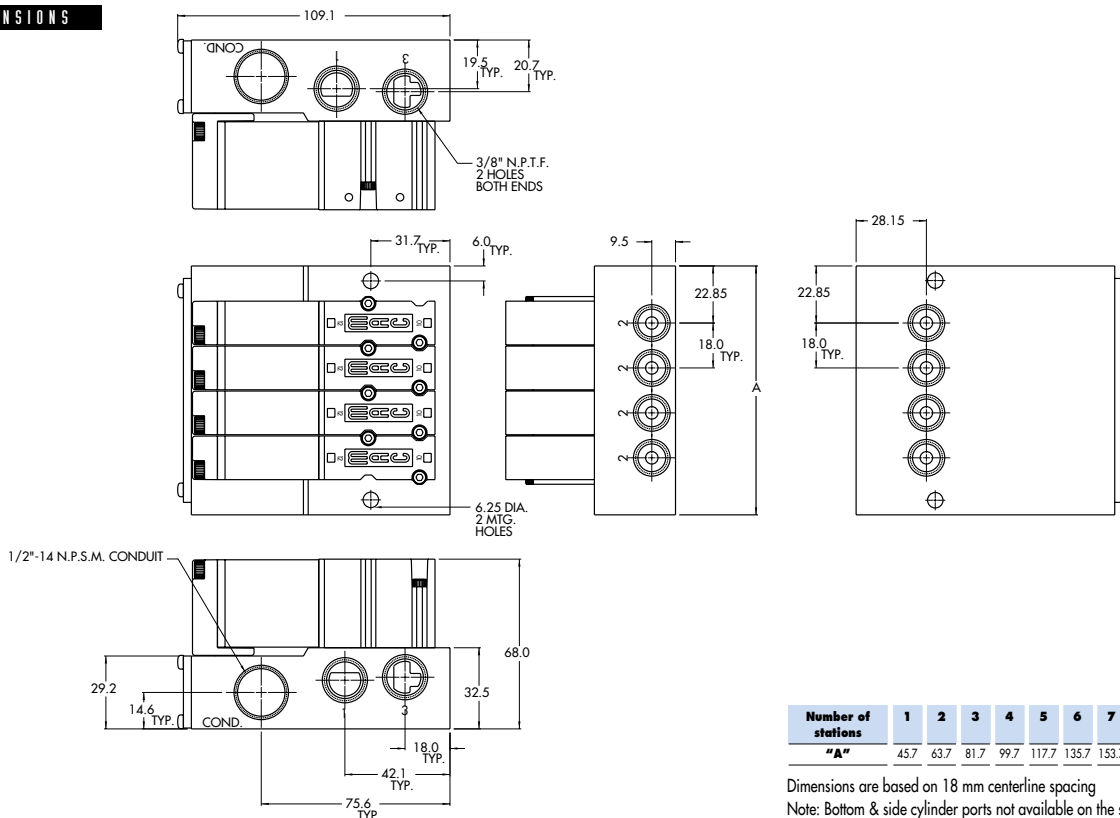
- A0 = without light
- AA = with light (120V)
- AB = with light (240V)
- AD = with light (24V)
- C0 = terminal strip

**T E C H N I C A L
D A T A**

Fluid :	Compressed air, vacuum, inert gases
Pressure range :	Vacuum to 120 PSI
Lubrication :	Not required, if used select a medium aniline point lubricant (between 180°F and 210°F)
Filtration :	40 µ
Temperature range :	0°F to 120°F (-18°C to 50°C)
Orifice :	4.3 mm
Flow (at 6 bar, ΔP=1bar) :	5.2 W : 0.50C _v , 2.4 W : 0.25C _v , 1.8 W : 0.15C _v
Coil :	General purpose class A, continuous duty, encapsulated
Voltage range :	-15% to +10% of nominal voltage
Power :	5.2 W - 2.4 W - 1.8 W - 1.0 W
Response times :	Energize : 17.0 ms
(with 5.2 W coil)	De-energize : 6.0 ms

- Note : • Valve and coil are not interchangeable.
- Spare parts : • Seal between valve and bar : 16630. • Mounting screw (x2) : 35043. • Blanking plate : M-37001.
• Base wire plug-in protector : 16520.
- Options : • Isolation of inlet and/or exhaust. Special bar. Consult factory. • BSPP Threads.

D I M E N S I O N S



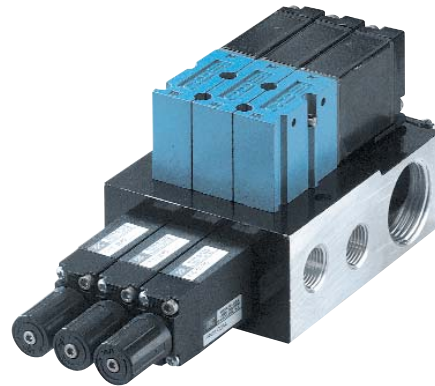
Number of stations	1	2	3	4	5	6	7	8	9	10
"A"	45.7	63.7	81.7	99.7	117.7	135.7	153.7	171.7	189.7	207.7

Dimensions are based on 18 mm centerline spacing
Note: Bottom & side cylinder ports not available on the same station

Function	Port size	Flow [Max]	Circuit bar mounting	Profile
3/2 NO-NC	1/8" - 1/4"	0.5C_v	plug-in with Pr. Reg.	44 mm

OPERATIONAL BENEFITS

1. Direct solenoid operated valve.
2. Balanced poppet, immune to variations of pressure.
3. Short stroke with high flow.
4. The patented solenoid develops high shifting forces.
5. Powerful return spring.
6. Manual operator standard on all valves.



HOW TO ORDER

37A-xxx-HxxP-xxx

HOW TO ORDER VALVE FOR CIRCUIT BAR MOUNTING

Port size (see base)	Universal valve	NC only valve
Valve less base	<input type="radio"/> 37A-C1O-HxxP-xxx	<input type="radio"/> 37A-D1O-HxxP-xxx

SOLENOID OPERATOR >

H XX P- X XX*

XX Voltage	X Manual operator	XX Electrical connection
<input type="radio"/> DC 24VDC (1.8 W)	<input type="radio"/> 1 Non-locking	<input type="radio"/> FA Plug-in
<input type="radio"/> DB 24VDC (2.4 W)		<input type="radio"/> FC Plug-in with light
<input type="radio"/> DA 24VDC (5.2 W)		<input type="radio"/> FE Plug-in with suppression diode
<input type="radio"/> AA 120VAC (Mod. No. required see below)		<input type="radio"/> FG Plug-in with suppression diode with LED light
<input type="radio"/> xx Other Options		<input type="radio"/> xx Other Options

ECD37A-xxxxx-xxxx

HOW TO ORDER "PLUG-IN" CIRCUIT BAR (REGULATORS ORDERED SEPARATELY)**

Port size	Spacing mm	Bottom cylinder ports
1/8" NPTF	18	<input type="radio"/> ECD37A-00CDA-A0xx
1/4" NPTF	18	<input type="radio"/> ECD37A-00CDB-A0xx
1/8" NPTF	30	<input type="radio"/> ECD37A-01CDA-C0xx
1/4" NPTF	30	<input type="radio"/> ECD37A-01CDB-C0xx

Number of stations (03=3 stations)
 ** Other options available, consult factory.
 Note : clic for valves mounted on base at the factory, add - 9 to the model number.
 clic for multi-pin connector (9, 15 or 25).
 for AC voltage use mod. FWR2 after circuit bar model number.

** Pressure Regulators :

PR37A-GOAx

- X=A (0 to 120 PSI)
- X=B (0 to 80 PSI)
- X=C (0 to 30 PSI)

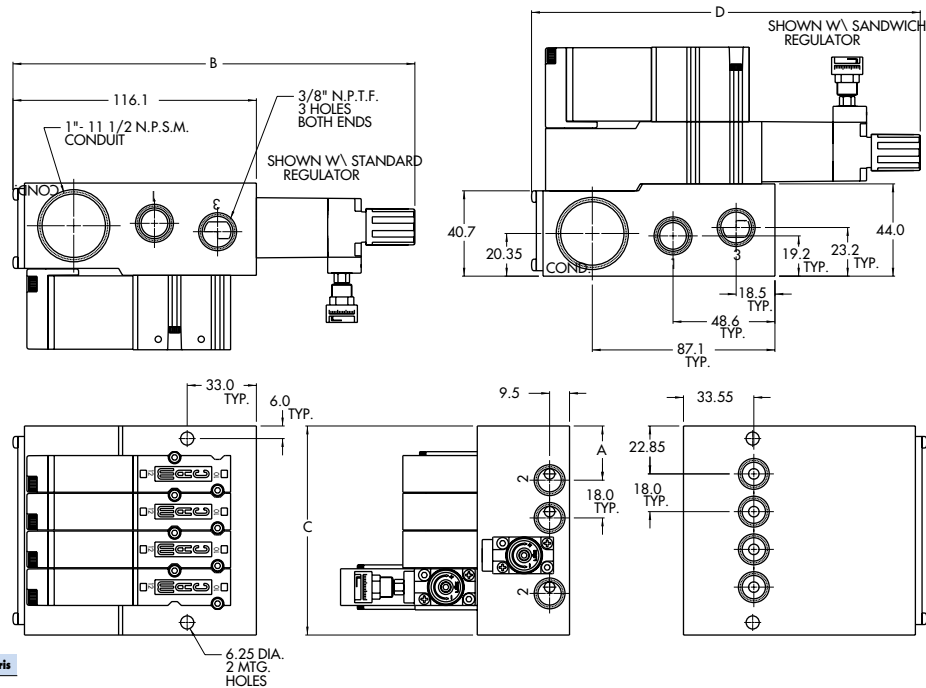
- A0 = without light
- AA = with light (120V)
- AB = with light (240V)
- AD = with light (24V)
- C0 = terminal strip
- CA = terminal strip with light (120V)
- CB = terminal strip with light (240V)
- CD = terminal strip with light (24V)

**TECHNICAL
DATA**

Fluid :	Compressed air, vacuum, inert gases
Pressure range :	Vacuum to 120 PSI
Lubrication :	Not required, if used select a medium aniline point lubricant (between 180°F and 210°F)
Filtration :	40 µ
Temperature range :	0°F to 120°F (-18°C to 50°C)
Orifice :	4.3 mm
Flow (at 6 bar, ΔP=1bar) :	5.2 W : 0.50C _v , 2.4 W : 0.25C _v , 1.8 W : 0.15C _v
Coil :	General purpose class A, continuous duty, encapsulated
Voltage range :	-15% to +10% of nominal voltage
Power :	5.2 W - 2.4 W - 1.8 W - 1.0 W
Response times :	Energize : 17.0 ms
(with 5.2 W coil)	De-energize : 6.0 ms

- Note : • Valve and coil are not interchangeable.
- Spare parts : • Seal between valve and bar : 16630. • Mounting screw (x2) : 35043. • Blanking plate : M-37001.
• Base wire plug-in protector : 16520. • Regulator blanking plate : R-47003.
- Options : • Isolation of inlet and/or exhaust. Special bar. Consult factory. • BSPP Threads.

DIMENSIONS



Dim.	1/4"	1/8"	6 mm Legris
"A"	25.85	25.85	22.85

Dim.	Regulator with locking adjusting screw	Regulator with adjusting screw	Regulator with adjusting knob
"B"	188.8	184.7	191.7
"D"	182.5	178.4	185.4

Number of stations	1	2	3	4	5	6	7	8	9	10
"C"	45.7	63.7	81.7	99.7	117.7	135.7	153.7	171.7	189.7	207.7

Dimensions are based on 18 mm centerline spacing
Note: Bottom & side cylinder ports not available on the same station

Function	Port size	Flow [Max]	Circuit bar mounting	Profile
3/2 NO-NC	1/8" - 1/4" 6 mm tube receptacle	0.5C_v	add-on style plug-in	44 mm

OPERATIONAL BENEFITS

1. Direct solenoid operated valve.
2. Balanced poppet, immune to variations of pressure.
3. Short stroke with high flow.
4. The patented solenoid develops high shifting forces.
5. Powerful return spring.
6. Manual operator standard on all valves.



HOW TO ORDER

37A-xxx-HxxP-xxx

HOW TO ORDER VALVE FOR CIRCUIT BAR MOUNTING

Port size (see base)	Universal valve	NC only valve
Valve less base	<input type="radio"/> 37A-C1O-HxxP-xxx	<input type="radio"/> 37A-D1O-HxxP-xxx

SOLENOID OPERATOR >

H **XX** P- **X** **XX***

XX Voltage	X Manual operator	XX Electrical connection
<input type="radio"/> DC 24VDC (1.8 W)	<input type="radio"/> 1 Non-locking	<input type="radio"/> FA Plug-in
<input type="radio"/> DB 24VDC (2.4 W)		<input type="radio"/> FC Plug-in with light
<input type="radio"/> DA 24VDC (5.2 W)		<input type="radio"/> FE Plug-in with suppression diode
<input type="radio"/> AA 120VAC (Mod. No. required see below)		<input type="radio"/> FG Plug-in with suppression diode with LED light
<input type="radio"/> xx Other Options		<input type="radio"/> xx Other Options

HOW TO ORDER "PLUG-IN" CIRCUIT BAR**

ECD37A-xxxxx-xxxx

Port size	Spacing mm	Side cylinder ports	Bottom cylinder ports
1/8" NPTF	18	<input type="radio"/> ECD37A-00AEA-A0xx	<input type="radio"/> ECD37A-00BEA-A0xx
1/4" NPTF	18	<input type="radio"/> ECD37A-00AEB-A0xx	<input type="radio"/> ECD37A-00BEB-A0xx
6 mm tube receptacle	18	<input type="radio"/> ECD37A-00AEG-A0xx	<input type="radio"/> ECD37A-00BEG-A0xx
1/8" NPTF	30	<input type="radio"/> ECD37A-01AEA-C0xx	<input type="radio"/> ECD37A-01BEA-C0xx
1/4" NPTF	30	<input type="radio"/> ECD37A-01AEB-C0xx	<input type="radio"/> ECD37A-01BEB-C0xx
6 mm tube receptacle	30	<input type="radio"/> ECD37A-01AEG-C0xx	<input type="radio"/> ECD37A-01BEG-C0xx

Number of stations (03=3 stations)

** Other options available, consult factory.

Note : clic for valves mounted on base at the factory, add - 9 to the model number.
 clic for multi-pin connector (9, 15 or 25).

for AC voltage use mod. FWR2 after circuit bar model number.

add-a-unit stations may be added to above bars. Clic here for model numbers.

- A0 = without light
- AA = with light (120V)
- AB = with light (240V)
- AD = with light (24V)
- C0 = terminal strip
- CA = terminal strip with light (120V)
- CB = terminal strip with light (240V)
- CD = terminal strip with light (24V)

**TECHNICAL
DATA**

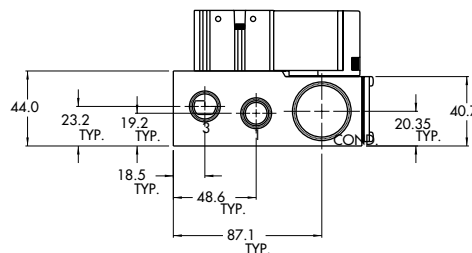
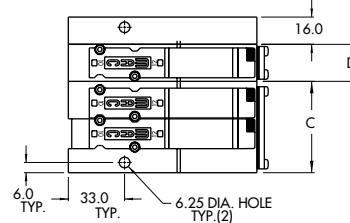
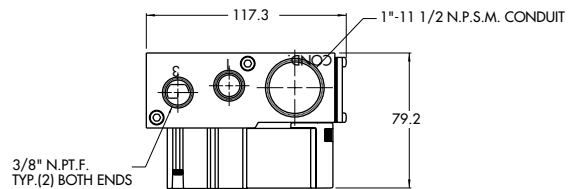
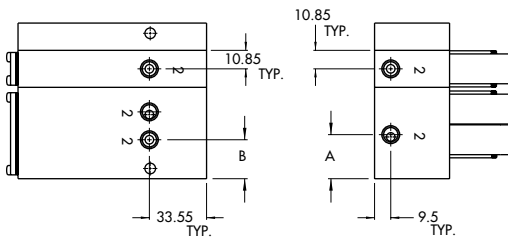
Fluid :	Compressed air, vacuum, inert gases
Pressure range :	Vacuum to 120 PSI
Lubrication :	Not required, if used select a medium aniline point lubricant (between 180°F and 210°F)
Filtration :	40 µ
Temperature range :	0°F to 120°F (-18°C to 50°C)
Orifice :	4.3 mm
Flow (at 6 bar, ΔP=1bar) :	5.2 W : 0.50C _v , 2.4 W : 0.25C _v , 1.8 W : 0.15C _v
Coil :	General purpose class A, continuous duty, encapsulated
Voltage range :	-15% to +10% of nominal voltage
Power :	5.2 W - 2.4 W - 1.8 W - 1.0 W
Response times :	Energize : 17.0 ms
(with 5.2 W coil)	De-energize : 6.0 ms

- Note : • Valve and coil are not interchangeable.
- Spare parts : • Seal between valve and bar : 16630. • Mounting screw (x2) : 35043. • Blanking plate : M-37001. • End plate kit : M-37003-01
- Options : • Base wire plug-in protector : 16520. • Isolator disc between add-a-units : 28438. • Isolation of inlet and/or exhaust. Special bar. Consult factory. • BSPP Threads.

DIMENSIONS

Number of stations	1	2	3	4	5	6	7	8	9	10
"C" w/regulator	-	53.6	71.6	89.6	107.6	125.6	143.6	161.6	179.6	197.6
"C" w/o regulator	-	51.85	69.85	87.85	105.85	123.85	141.85	159.85	177.85	195.85
"D"	21.7	39.7	57.7	75.7	-	-	-	-	-	-

Dimensions are based on 18 mm centerline spacing
 Note: Bottom & side cylinder ports not available on the same station



Dim.	1/8"	1/4"	6 mm Legris	1/8" w/regulator	1/4" w/regulator
"A"	22.65	24.20	22.85	-	-
"B"	22.85	22.85	25.85	21.20	22.60

Function	Port size	Flow [Max]	Circuit bar mounting	Profile
3/2 NO-NC	1/8" - 1/4"	0.5C_v	add-on style plug in with Pr. Reg.	44 mm

OPERATIONAL BENEFITS

1. Direct solenoid operated valve.
2. Balanced poppet, immune to variations of pressure.
3. Short stroke with high flow.
4. The patented solenoid develops high shifting forces.
5. Powerful return spring.
6. Manual operator standard on all valves.



HOW TO ORDER

37A-xxx-HxxP-xxx

HOW TO ORDER VALVE FOR CIRCUIT BAR MOUNTING

Port size (see base)	Universal valve	NC only valve
Valve less base	<input type="radio"/> 37A-C1O-HxxP-xxx	<input type="radio"/> 37A-D1O-HxxP-xxx

SOLENOID OPERATOR >

H **XX** P- **X** **XX***

XX Voltage	X Manual operator	XX Electrical connection
<input type="radio"/> DC 24VDC (1.8 W)	<input type="radio"/> 1 Non-locking	<input type="radio"/> FA Plug-in
<input type="radio"/> DB 24VDC (2.4 W)		<input type="radio"/> FC Plug-in with light
<input type="radio"/> DA 24VDC (5.2 W)		<input type="radio"/> FE Plug-in with suppression diode
<input type="radio"/> AA 120VAC (Mod. No. required see below)		<input type="radio"/> FG Plug-in with suppression diode with LED light
<input type="radio"/> xx Other Options		<input type="radio"/> xx Other Options

HOW TO ORDER "PLUG-IN" CIRCUIT BAR (REGULATORS ORDERED SEPARATELY)**

ECD37A-xxxxx-xxxx

Port size	Spacing mm	Bottom cylinder ports
1/8" NPTF	18	<input type="radio"/> ECD37A-00CEA-A0xx
1/4" NPTF	18	<input type="radio"/> ECD37A-00CEB-A0xx
1/8" NPTF	30	<input type="radio"/> ECD37A-01CEA-C0xx
1/4" NPTF	30	<input type="radio"/> ECD37A-01CEB-C0xx

Number of stations (03=3 stations)

** Other options available, consult factory.

Note : clic for valves mounted on base at the factory, add - 9 to the model number. clic for multi-pin connector (9, 15 or 25).

for AC voltage use mod. FWR2 after circuit bar model number.

add-a-unit stations may be added to above bars. Clic here for model numbers.

** Pressure Regulators :

PR37A-GOAx

X=A (0 to 120 PSI)

X=B (0 to 80 PSI)

X=C (0 to 30 PSI)

A0 = without light

AA = with light (120V)

AB = with light (240V)

AD = with light (24V)

C0 = terminal strip

CA = terminal strip with light (120V)

CB = terminal strip with light (240V)

CD = terminal strip with light (24V)

Function	Port size	Flow [Max]	Circuit bar mounting	Profile
3/2 NO-NC	1/8" - 1/4" 6 mm tube receptacle	0.5C_v	plug-in add-a-unit stations	44 mm

OPERATIONAL BENEFITS

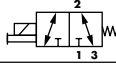
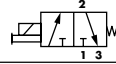
1. Direct solenoid operated valve.
2. Balanced poppet, immune to variations of pressure.
3. Short stroke with high flow.
4. The patented solenoid develops high shifting forces.
5. Powerful return spring.
6. Manual operator standard on all valves.

Reset

HOW TO ORDER

37A-xxx-HxxP-xxx

HOW TO ORDER VALVE FOR CIRCUIT BAR MOUNTING

Port size (see base)	Universal valve	NC only valve
		
Valve less base	<input type="radio"/> 37A-C1O-HxxP-xxx	<input type="radio"/> 37A-D1O-HxxP-xxx

SOLENOID OPERATOR >

H **XX** P- **X** **XX***

XX Voltage	X Manual operator	XX Electrical connection
<input type="radio"/> DC 24VDC (1.8 W)	<input type="radio"/> 1 Non-locking	<input type="radio"/> FA Plug-in
<input type="radio"/> DB 24VDC (2.4 W)		<input type="radio"/> FC Plug-in with light
<input type="radio"/> DA 24VDC (5.2 W)		<input type="radio"/> FE Plug-in with suppression diode
<input type="radio"/> AA 120VAC (Mod. No. required see below)		<input type="radio"/> FG Plug-in with suppression diode with LED light
<input type="radio"/> xx Other Options		<input type="radio"/> xx Other Options

HOW TO ORDER "PLUG-IN" CIRCUIT BAR**

ECD37A-xxxxx-xxxx

Port size	Spacing mm	Side cylinder ports	Bottom cylinder ports
1/8" NPTF	18	<input type="radio"/> ECD37A-00AFA-A0xx	<input type="radio"/> ECD37A-00BFA-A0xx
1/4" NPTF	18	<input type="radio"/> ECD37A-00AFB-A0xx	<input type="radio"/> ECD37A-00BFB-A0xx
6 mm tube receptacle	18	<input type="radio"/> ECD37A-00AFG-A0xx	<input type="radio"/> ECD37A-00BFG-A0xx
1/8" NPTF	30	<input type="radio"/> ECD37A-01AFA-C0xx	<input type="radio"/> ECD37A-01BFA-C0xx
1/4" NPTF	30	<input type="radio"/> ECD37A-01AFB-C0xx	<input type="radio"/> ECD37A-01BFB-C0xx
6 mm tube receptacle	30	<input type="radio"/> ECD37A-01AFG-C0xx	<input type="radio"/> ECD37A-01BFG-C0xx

Number of stations (03=3 stations) - maximum length is 4 stations.

** Other options available, consult factory.

Note : clic for valves mounted on base at the factory, add - 9 to the model number.
for AC voltage use mod. FWR2 after circuit bar model number.
when add-a-unit stations are added to bars with a multi-pin connector, mod SD03 should be included with add-a-unit model number.

- A0 = without light
- AA = with light (120V)
- AB = with light (240V)
- AD = with light (24V)
- C0 = terminal strip
- CA = terminal strip with light (120V)
- CB = terminal strip with light (240V)
- CD = terminal strip with light (24V)

Function	Port size	Flow [Max]	Circuit bar mounting	Profile
3/2 NO-NC	1/8" - 1/4"	0.5C_v	plug-in add-a-unit stations with Pr. Reg.	44 mm

OPERATIONAL BENEFITS

1. Direct solenoid operated valve.
2. Balanced poppet, immune to variations of pressure.
3. Short stroke with high flow.
4. The patented solenoid develops high shifting forces.
5. Powerful return spring.
6. Manual operator standard on all valves.



HOW TO ORDER

37A-xxx-HxxP-xxx

HOW TO ORDER VALVE FOR CIRCUIT BAR MOUNTING

Port size (see base)	Universal valve	NC only valve
Valve less base	<input type="radio"/> 37A-C1O-HxxP-xxx	<input type="radio"/> 37A-D1O-HxxP-xxx

SOLENOID OPERATOR >

H **XX** P- **X** **XX***

XX Voltage	X Manual operator	XX Electrical connection
<input type="radio"/> DC 24VDC (1.8 W)	<input type="radio"/> 1 Non-locking	<input type="radio"/> FA Plug-in
<input type="radio"/> DB 24VDC (2.4 W)		<input type="radio"/> FC Plug-in with light
<input type="radio"/> DA 24VDC (5.2 W)		<input type="radio"/> FE Plug-in with suppression diode
<input type="radio"/> AA 120VAC (Mod. No. required see below)		<input type="radio"/> FG Plug-in with suppression diode with LED light
<input type="radio"/> xx Other Options		<input type="radio"/> xx Other Options

HOW TO ORDER "PLUG-IN" CIRCUIT BAR (REGULATORS ORDERED SEPARATELY)**

ECD37A-xxxxxx-xxxx

Port size	Spacing mm	Bottom cylinder ports
1/8" NPTF	18	<input type="radio"/> ECD37A-00CFA-A0xx
1/4" NPTF	18	<input type="radio"/> ECD37A-00CFB-A0xx
1/8" NPTF	30	<input type="radio"/> ECD37A-01CFA-C0xx
1/4" NPTF	30	<input type="radio"/> ECD37A-01CFB-C0xx

Number of stations (03=3 stations) - maximum length is 4 stations.
 ** Other options available, consult factory.
 Note : clic for valves mounted on base at the factory, add - 9 to the model number.
 for AC voltage use mod. FWR2 after circuit bar model number.
 when add-a-unit stations are added to bars with a multi-pin connector, mod SD03 should be included with add-a-unit model number.

** Pressure Regulators :
 PR37A-GOAx
 X=A (0 to 120 PSI)
 X=B (0 to 80 PSI)
 X=C (0 to 30 PSI)

- A0 = without light
- AA = with light (120V)
- AB = with light (240V)
- AD = with light (24V)
- C0 = terminal strip
- CA = terminal strip with light (120V)
- CB = terminal strip with light (240V)
- CD = terminal strip with light (24V)



Section 2

Options



0 p t i o n s

Codification table for voltages / Wire length / Manual operators / Electrical connections

VALVE CODE ➤

-HXX X - X XX
1 2 3 4

OPTIONS AVAILABLE FOR

- Solenoid valves 37 & 47 Series

1. VOLTAGE

- H XX	X - X XX	VOLTAGE
DC Options		
<input type="radio"/>	DA	24 VDC (5.2 W)
<input type="radio"/>	DB	24 VDC (2.4 W)
<input type="radio"/>	DC	24 VDC (1.8 W)
<input type="radio"/>	DD	24 VDC (1.0 W)
<input type="radio"/>	DF	12 VDC (5.2 W)
<input type="radio"/>	DG	12 VDC (2.4 W)
<input type="radio"/>	DH	12 VDC (1.8 W)
<input type="radio"/>	DJ	12 VDC (1.0 W)
<input type="radio"/>	DL	120 VDC (6.3 W)
AC Options (50/60hz)		
<input type="radio"/>	AA	120 VAC (6.7 W)
<input type="radio"/>	AB	220 VAC (5.6 W)
<input type="radio"/>	AC	240 VAC (5.8 W)
<input type="radio"/>	AD	24 VAC (7.8 W)

Note : AC Voltages only available with "H" & "F" type connectors. MOD FWR2 must be used with the "F" type connectors.

2. WIRE LENGTH

- H XX	X - X XX	WIRE LENGTH
<input type="radio"/>	O	No lead wire
<input type="radio"/>	A	18"
<input type="radio"/>	B	24"
<input type="radio"/>	C	36"
<input type="radio"/>	D	48"
<input type="radio"/>	E	72"
<input type="radio"/>	F	96"
<input type="radio"/>	G	120"
<input type="radio"/>	H	144"
<input type="radio"/>	P	Plug-in (used only with "F" type connector Opts.)

Use "O" with MJ & MM Opts.

3. MANUAL OPERATOR

- H XX	X - X XX	MANUAL OPERATOR
<input type="radio"/>	0	No operator
<input type="radio"/>	1	Non-locking recessed
<input type="radio"/>	2	Locking recessed
<input type="radio"/>	3	Non-locking extended
<input type="radio"/>	4	Locking extended

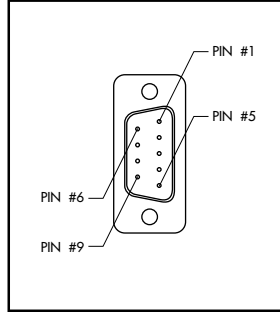


4. ELECTRICAL CONNECTION

- H XX	X - X XX	ELECTRICAL CONNECTION
<input type="radio"/>	BA	Flying leads
<input type="radio"/>	BB	Flying leads with ground wire
<input type="radio"/>	BC	Flying leads with led light
<input type="radio"/>	BD	Flying leads with led light & ground wire
<input type="radio"/>	BE	Flying leads with suppression diode
<input type="radio"/>	BF	Flying leads with suppression diode & ground wire
<input type="radio"/>	BG	Flying leads with suppression diode plus led light
<input type="radio"/>	BH	Flying leads with suppression diode plus led light & ground wire
<input type="radio"/>	*BN	Flying leads with suppression diode plus blocking diode
<input type="radio"/>	*BP	Flying leads with suppression diode plus blocking diode & ground wire
<input type="radio"/>	*BR	Flying leads with suppression diode plus blocking diode & led light
<input type="radio"/>	*BS	Flying leads with suppression diode plus blocking diode & led light & ground wire
<input type="radio"/>	FA	Plug-in
<input type="radio"/>	FB	Plug-in with ground wire
<input type="radio"/>	FC	Plug-in with led light
<input type="radio"/>	FD	Plug-in with led light & ground wire
<input type="radio"/>	FE	Plug-in with suppression diode
<input type="radio"/>	FF	Plug-in with suppression diode & ground wire
<input type="radio"/>	FG	Plug-in with suppression diode plus led light
<input type="radio"/>	FH	Plug-in with suppression diode plus led light & ground wire
		Note : FA ---- FH options for use with ECD type circuit bars
<input type="radio"/>	HA	Circuit board plug-in with full wave rectifier & led light
<input type="radio"/>	HB	Circuit board with full wave rectifier & led with ground wire
<input type="radio"/>	HC	Same as "HA" without lead wires
<input type="radio"/>	HD	Same as "HB" without lead wires
<input type="radio"/>	HL	Circuit board plug-in with suppression diode plus blocking diode & led light
<input type="radio"/>	HN	Same as "HL" without lead wires
<input type="radio"/>	MA	Plug-in wire assembly
<input type="radio"/>	MB	Plug-in wire assembly with ground wire
<input type="radio"/>	MC	Plug-in wire assembly with led light
<input type="radio"/>	MD	Plug-in wire assembly led light & ground wire
<input type="radio"/>	ME	Plug-in wire assembly with suppression diode
<input type="radio"/>	MF	Plug-in wire assembly with suppression diode & ground wire
<input type="radio"/>	*MG	Plug-in wire assembly suppression diode plus led light
<input type="radio"/>	*MH	Plug-in wire assembly suppression diode plus led light & ground wire
<input type="radio"/>	*MN	Plug-in wire assembly with suppression diode plus blocking diode
<input type="radio"/>	*MP	Plug-in wire assembly with suppression diode plus blocking diode & ground wire
<input type="radio"/>	MR	Plug-in wire assembly with suppression diode plus blocking diode & led light
<input type="radio"/>	MS	Plug-in wire assembly with suppression diode plus blocking diode & led light & ground wire
<input type="radio"/>	MJ	Plug-in housing w/o wire assembly ("MA" option without wire assembly)
<input type="radio"/>	MM	Plug-in housing w/o wire assembly ("MB" option without wire assembly)

* Blocking diode is in lead wire.

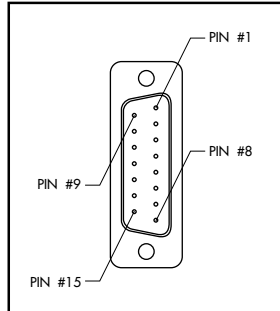
MOD. S009



TECHNICAL DATA

- Type «SUB_D»
- Number of contacts : 9
- Solder termination (Dia. 0.6 mm/0.14 mm²/26-22 AWG)
- Operating current 5 A/contact
- Rated voltage 125 V~
- Temp. range -40° to +125°C
- Insulation resistance ≥ 5.0⁹ Ω
- Protection class IP40 (DIN 40050)
- Number of solenoids : 7 max.
- Max. 24 V=/5.4 W per solenoid
- 2 common wires

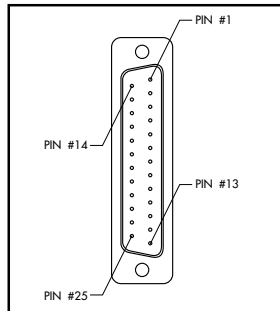
MOD. S015



TECHNICAL DATA

- Type «SUB_D»
- Number of contacts : 15
- Solder termination (Dia. 0.6 mm/0.14 mm²/26-22 AWG)
- Operating current 5 A/contact
- Rated voltage 125 V~
- Temp. range -40° to +125°C
- Insulation resistance ≥ 5.0⁹ Ω
- Protection class IP40 (DIN 40050)
- Number of solenoids : 12 max.
- Max. 24 V=/5.4 W per solenoid
- 3 common wires

MOD. S025

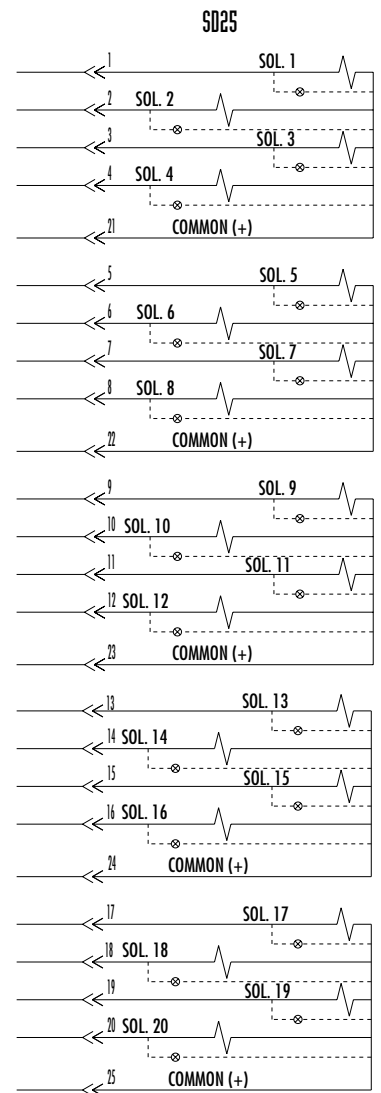
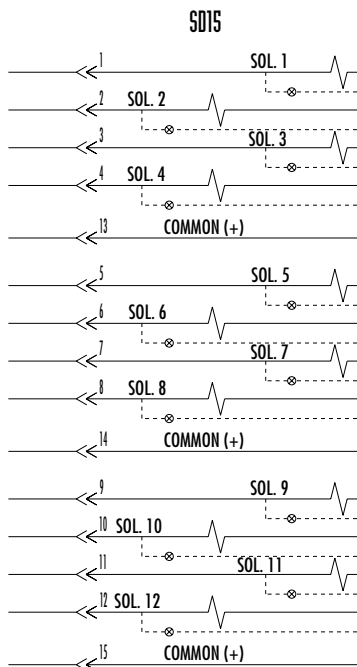
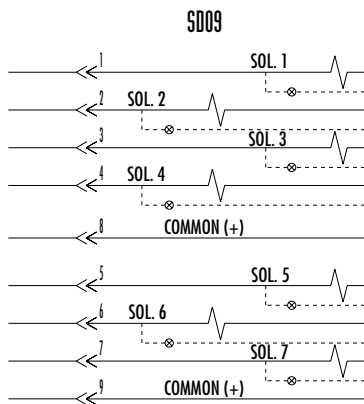
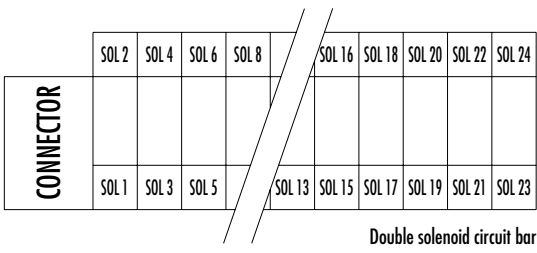
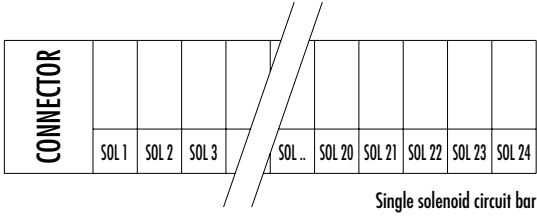


TECHNICAL DATA

- Type «SUB_D»
- Number of contacts : 25
- Solder termination (Dia. 0.6 mm/0.14 mm²/26-22 AWG)
- Operating current 5 A/contact
- Rated voltage 125 V~
- Temp. range -40° to +125°C
- Insulation resistance ≥ 5.0⁹ Ω
- Protection class IP40 (DIN 40050)
- Number of solenoids : 20 max.
- Max. 24 V=/5.4 W per solenoid
- 5 common wires

Note : Use desired MOD. number after circuit bar part number

Connector termination details





PRECAUTIONS CONCERNING THE APPLICATION, INSTALLATION AND SERVICE OF MAC VALVES

The precautions below are important to be read and understood before designing into a system any MAC valve, and before installing or servicing any MAC valve. Improper use, installation or servicing of any MAC valve in some systems could create a hazard to personnel or equipment.

APPLICATION PRECAUTIONS :

INDUSTRIAL USE -

MAC valves are intended for use in industrial pneumatic and/or vacuum systems. They are not intended for consumer use or service. They are general purpose industrial valves with literally thousands of different applications in industrial systems. These products are not inherently dangerous, but they are only a component of an overall system. The system in which they are used must provide adequate safeguards to prevent injury or damage in the event failure occurs, whether it be failure of switches, regulators, cylinders, valves or any other component.

POWER PRESSES -

MAC valves are not designed nor intended to be used to operate and/or control the operation of clutch and/or brake systems on power presses. There are special products on the market for such use.

2-POSITION VALVES -

Some MAC valves are 2-position, 4-way valves. When air is supplied to the inlet port(s) of these valves, there will always be a flow path from the inlet to one of the outlets regardless of which of the two positions the valve is situated. Therefore, if pressurized air retained in the system would present a hazard in the application or servicing of the valve or system, a separate method in the system must be provided to remove the trapped air.

3- POSITION VALVES-

Some MAC valves are 3-position, 4-way valves. These valves are either double solenoid or double remote air operated.

If either of the two operators is in control, air supplied to the inlet port(s) will pass through the valve to one of the outlets as on 2-position, 4-way valves. However, if neither operator is in control, the valve moves to a center position. Listed below are the various center position functions :

A. CLOSED CENTER-

With this type valve, when in the center position all ports are blocked (inlets and exhausts) meaning the air at both outlet ports is trapped. If trapping the air in both outlet ports would present a hazard in the application or servicing, a separate method in the system must be provided to remove the trapped air or this type valve should not be used.

B. OPEN CENTER-

With this type valve, when in the center position, the inlet port(s) is blocked and the two outlet ports are open to the exhaust port(s) of the valve. If having no air in either outlet port would present a hazard in the application or servicing, this type valve should not be used.

C. PRESSURE CENTER-

With this type valve, when in the center position, the inlet port(s) is connected to both outlet ports of the valve. If having pressurized air to either or both outlet ports would present a hazard in the application or servicing of the valve or system, a separate method in the system must be provided to remove the retained air.

OPERATING SPECIFICATIONS -

MAC valves are to be installed only on applications that meet all operating specifications described in the MAC catalog for the valve.

MANUAL OPERATORS-

Most MAC valves can be ordered with manual operators. Manual operators when depressed, are designed to shift the valve to the same position as would the corresponding solenoid or remote air pilot operator if it were activated. Care must be taken to order a type, if any, that will be safe for the physical location of the manual operator in the system. Accidental activation of a manual operator could create a dangerous situation. If intentional or accidental operation of a valve by a manual operator could create a dangerous situation then the "no operator" option should be used.

REMOTE AIR OPERATED VALVES

Pilot valves supplying signal pressure to remote air operated valves should be 3-way valves with adequate supply and exhaust capacity to provide positive pressurizing and exhausting of the pilot supply line. Pilot lines should be open to exhaust when valves are deenergized.

INSTALLATION AND SERVICE PRECAUTIONS :

- A. Do not install or service MAC valves without first making sure both the air and electrical power to the machine are off and that all air has been completely bled from the system.
- B. MAC valves should only be installed and/or serviced by qualified, knowledgeable personnel who understand how the specific valve is to be pneumatically piped and electrically connected (where applicable). Flow paths through the valve are shown in the catalog and on the valve by use of ANSI or ISO type standard and graphic symbols. Do not install unless these symbols and the valve functions and operations are thoroughly understood.
- C. Before service, maintenance, repair or cleaning, consult local distributor or factory for Parts & Operation Sheet and information on proper cleaning and lubrication agents. Do not subject MAC valves' parts to any foreign substance including lubricants and cleaning agents not specifically recommended by MAC valves, Inc.
- D. MAC valves are never to be stepped on while working on a machine. Damage to the valve, or lines to the valve (either air or electrical lines) or accidental activating of a manual operator on the valve could result in a dangerous condition.

WARNING :

Under no circumstances are Mac valves to be used in any application where failure of the valve to operate as intended could jeopardize the safety of the operator or any other person.

- Do not operate outside of pressure range listed on valve label or outside of designated temperature range.
- Air supply must be clean. Contamination of valve can affect proper operation.
- Before attempting to repair, adjust or clean valve, consult catalog, parts & operation sheet, or factory for proper maintenance procedures, lubrication, and cleaning agents. Never attempt to repair or perform other maintenance with air pressure to valve.
- If airline lubrication is used, consult catalog, parts & operation sheet, or factory for recommended lubricants.

LIMITATION OF GUARANTEE

This Guarantee is limited to the replacement or rebuilding of any valve which should fail to operate properly. Valves, under the MAC Guarantee, must be returned (with or without bases) transportation prepaid and received at our factory within the Guarantee period. They will be returned to the customer at the expense of MAC Valves, Inc., and will carry the same guarantee as provided under the Flat Rate Rebuild Program.

DISCLAIMER OF GUARANTEE

No claims for labor, material, time, damage, or transportation are allowable nor will any valve be replaced or rebuilt under this guarantee which has been damaged by the purchaser not in the normal course of its use and maintenance during the warranty period. The guarantee does not apply to loss or damage caused by fire, theft, riot, explosion, labor dispute, act of God, or other causes beyond the control of MAC Valves, Inc. MAC Valves, Inc. shall in no event be liable for remote, special or consequential damages under the MAC Guarantee, nor under any implied warranties, including the implied warranty of merchantability.

The above Guarantee is our manner of extending the engineering and service resources of the MAC Valves, Inc. organization to assure our customer long, and continued satisfaction.