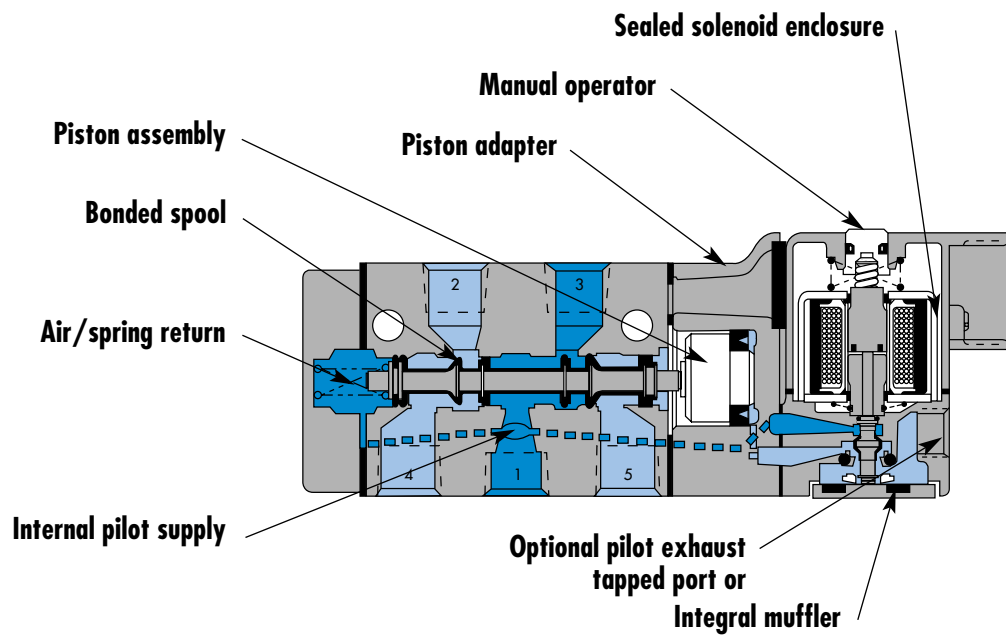


Circuit bar mounting

cylinder ports in valve	with shut-off valve
----------------------------	------------------------



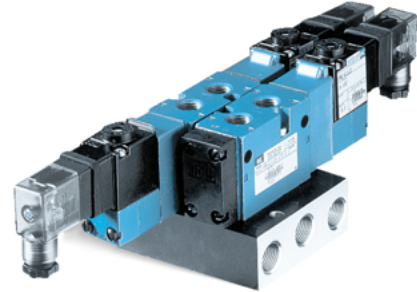
SERIES FEATURES

- Patented MACSOLENOID[®] with its non-burn out feature on AC service.
- Air/spring return on single solenoid valves.
- Use for lube or non-lube service.
- Optional low wattage DC solenoids down to 1 watt.
- Various types of manual operators and solenoid enclosures.
- 2 position or 3 position valve configurations.

Function	Port size	Flow [Max]	Circuit bar mounting
5/2 - 5/3	1/4"	1.3C_v	cylinder ports in valve

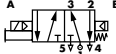
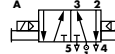
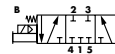

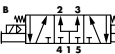
OPERATIONAL BENEFITS

- Balanced spool, immune to variations of pressure.
- Short stroke with high flow.
- The piston (booster) provides maximum shifting forces.
- Powerful return force thanks to the combination of mechanical and air springs.
- Bonded spool with minimum friction, shifting in a glass-like finished bore.
- Wiping effect eliminates sticking.
- Pilot valve with balanced poppet, high flow, short and consistent response times.
- Long service life.



HOW TO ORDER

HOW TO ORDER VALVE FOR CIRCUIT BAR MOUNTING

Port size	5/2 Single operator	5/2 Double operator	5/3 Closed center	5/3 Open center	5/3 Pressure center
					
1/4" NPTF	811C-PM- XX YZZ-172	821C-PM- XX YZZ-172	825C-PM- XX YZZ-572	825C-PM- XX YZZ-672	825C-PM- XX YZZ-872

SOLENOID OPERATOR >

XX Y ZZ*

Voltage		Manual operator		Electrical connection	
11	120/60, 110/50	1	Non-locking	JB	Rectangular connector
12	240/60, 220/50	2	Locking	JD	Rectangular connector with light
22	24/50, 24/60			BA	Flying leads (18")
59	24VDC (2.5 W)				
87	24VDC (17.1 W)				
61	24VDC (8.5 W)				

HOW TO ORDER CIRCUIT BAR**

Port size (Spacing 31 mm)	Standard circuit bar	Circuit bar with flow controls (2 per station)
3/8" NPTF	EBM800A-001A- XX	EBM800A-002A- XX

Number of stations (03=3 stations)

Other options available. Consult factory.

Note : clic for valves mounted on base at the factory (add - 9 to the model number).

**TECHNICAL
DATA**

Fluid :	Compressed air, vacuum, inert gases	
Pressure range :	Internal pilot : single operator and 3 positions : 20 to 150 PSI	double operator : 10 to 150 PSI
	External pilot : vacuum to 200 PSI	
Pilot pressure :	Single operator and 3 positions : 20 to 150 PSI	Double operator : 20 to 150 PSI
Lubrication :	Not required, if used select a medium aniline point lubricant (between 180°F to 210°F)	
Filtration :	40 µ	
Temperature range :	0°F to 120°F (-18°C to +50°C)	
Orifice :	7 mm	
Flow (at 6 bar, ΔP=1bar) :	1/4" : 1.3 C _v	
Coil :	General purpose class A, continuous duty, encapsulated	
Voltage range :	-15% to +10% of nominal voltage	
Protection :	NEMA 4	
Power :	~ Inrush : 14.8 VA	Holding : 10.9 VA
	= 1 to 17.1 W	
Response times :	24 V= /8.5 W	Energize : 8 ms De-energize : 10ms
	60Hz/6 W	Energize : 5-11 ms De-energize : 9-16 ms

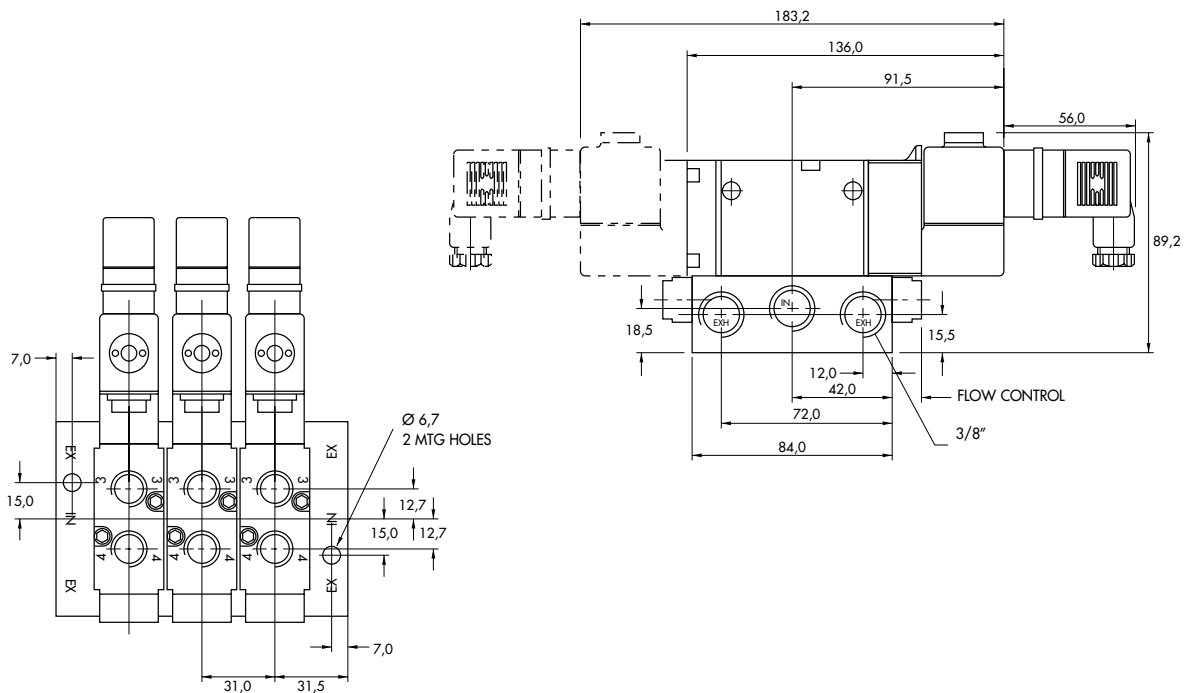
Spare parts :

- Pilot valve : PME.XXYZZ. • Mounting screw pilot to main valve : 34364. • Blanking plate : M-08008.
- Mounting screw valve to bar (x2) : 35249. • Flow control : N08006.

Options :

- BSPP threads. • Isolation of inlet and/or exhaust. • Explosion-proof model.

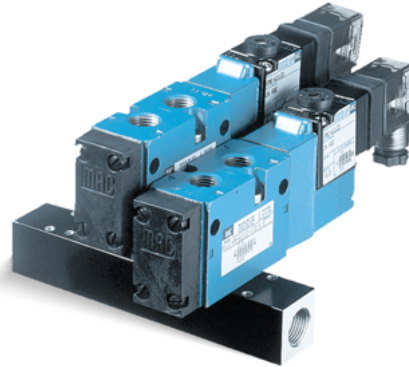
DIMENSIONS



Function	Port size	Flow [Max]	Circuit bar mounting
5/2 - 5/3	1/4"	1.3C_v	with shut-off valve

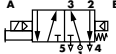

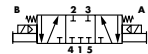
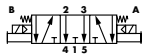
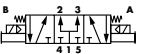
OPERATIONAL BENEFITS

- Balanced spool, immune to variations of pressure.
- Short stroke with high flow.
- The piston (booster) provides maximum shifting forces.
- Powerful return force thanks to the combination of mechanical and air springs.
- Bonded spool with minimum friction, shifting in a glass-like finished bore.
- Wiping effect eliminates sticking.
- Pilot valve with balanced poppet, high flow, short and consistent response times.
- Long service life.



HOW TO ORDER

HOW TO ORDER VALVE FOR CIRCUIT BAR MOUNTING

Port size	5/2 Single operator	5/2 Double operator	5/3 Closed center	5/3 Open center	5/3 Pressure center
					
1/4" NPTF	811C-PM- XXYYZ -172	821C-PM- XXYYZ -172	825C-PM- XXYYZ -572	825C-PM- XXYYZ -672	825C-PM- XXYYZ -872

SOLENOID OPERATOR >

XX Y ZZ

Voltage		Manual operator	Electrical connection	
11	120/60, 110/50	1 Non-locking	JB	Rectangular connector
12	240/60, 220/50	2 Locking	JD	Rectangular connector with light
22	24/50, 24/60		BA	Flying leads (18")
59	24VDC (2.5 W)			
87	24VDC (17.1 W)			
61	24VDC (8.5 W)			

HOW TO ORDER CIRCUIT BAR**

Port size (Spacing 31 mm)	w/o inlet shut-off valve	w/ inlet shut-off valve
3/8" NPTF	EBI800A-001A- XX	EBI800A-002A- XX

Number of stations (03=3 stations)

Other options available. Consult factory.

Note : clic for valves mounted on base at the factory (add - 9 to the model number).

**TECHNICAL
DATA**

Fluid :	Compressed air, vacuum, inert gases	
Pressure range :	Internal pilot : single operator and 3 positions : 20 to 150 PSI	double operator : 10 to 150 PSI
	External pilot : vacuum to 200 PSI	
Pilot pressure :	Single operator and 3 positions : 20 to 150 PSI	Double operator : 20 to 150 PSI
Lubrication :	Not required, if used select a medium aniline point lubricant (between 180°F to 210°F)	
Filtration :	40 µ	
Temperature range :	0°F to 120°F (-18°C to +50°C)	
Orifice :	7 mm	
Flow (at 6 bar, ΔP=1bar) :	1/4" : 1.3 C _v	
Coil :	General purpose class A, continuous duty, encapsulated	
Voltage range :	-15% to +10% of nominal voltage	
Protection :	NEMA 4	
Power :	~ Inrush : 14.8 VA	Holding : 10.9 VA
	= 1 to 17.1 W	
Response times :	24 V=/8.5 W	Energize : 8 ms De-energize : 10ms
	60Hz/6 W	Energize : 5-11 ms De-energize : 9-16 ms

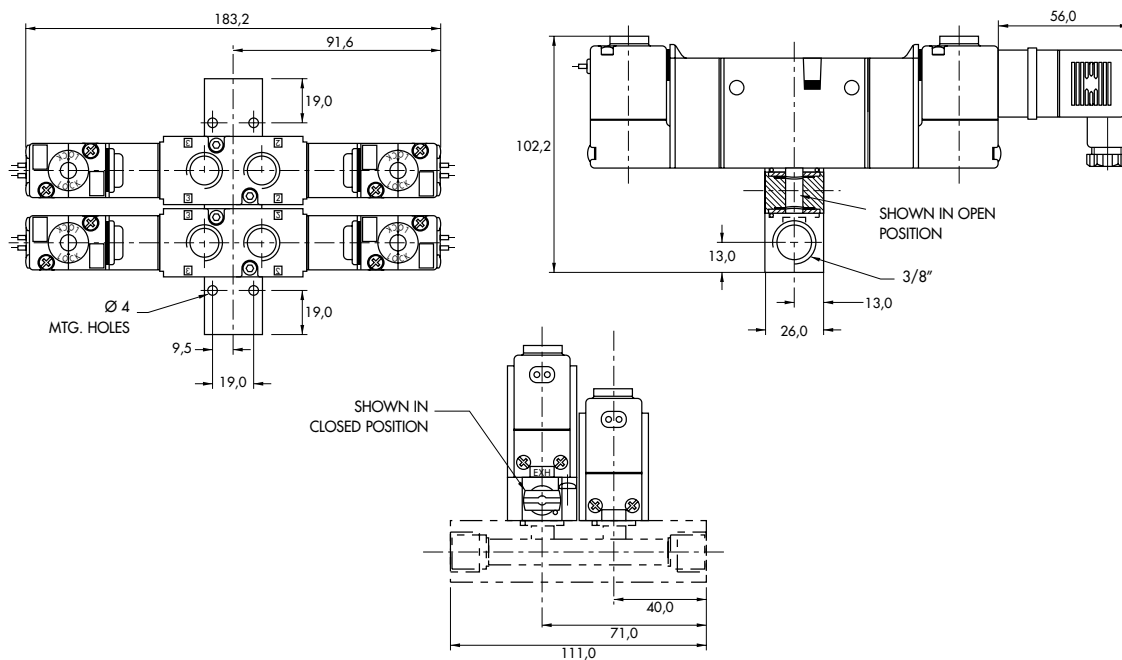
Spare parts :

- Pilot valve : PME-XYZZ.
- Mounting screw pilot to main valve : 34364.
- Blanking plate : M-08011.
- Shut-off valve : M-08010.
- Mounting screw valve to bar (x2): 35249.

Options :

- BSPP threads.
- Isolation of inlet and/or exhaust.
- Explosion-proof model.

DIMENSIONS





Section 2

Options



0 p t i o n s

Codification table for voltages / Manual operator / Electrical connection / Wire length

VALVE CODE ➤ $\frac{-XX}{1} \frac{Y}{2} \frac{ZZ}{3} \frac{(-VV)}{4}$

OPTIONS AVAILABLE FOR

- valves type 800 Series

1. VOLTAGE

- XX Y ZZ	VOLTAGE
11	120/60 - 110/50
12	240/60 - 220/50
13	100/60 - 100/50
15	200/60 - 200 V~/50 Hz
16	10/60
20	6/60
21	12/50 - 12/60
22	24/60 - 24/50
23	32/60 - 32/50
24	48/60 - 42/50
26	380/50, 440/50 -440/60, 480/60-CLSF
29	200/60
34	127/50 - 120/50
35	48/50
36	16/60
81	24/50
50	24 VDC (6W)
51	24 VDC (4W)
54	12 VDC (4W)
55	12 VDC (6W)
57	12 VDC (2.5W)
59	24 VDC (2.5W)
60	12 VDC (8.5W)
61	24 VDC (8.5W)
64	6 VDC (6W)
65	32 VDC (7W)
66	48 VDC (5.8W)
67	64 VDC (7.5W)
68	120 VDC (6.4W)
75	90 VDC (8.8W)
76	100 VDC (6.9W)
* 84	125 VDC (10.9W)
* 87	24 VDC (17.1W)
* 88	12 VDC (17.4W)
* 89	36 VDC (18.8W)
90	28 VDC (8.2W)
* 91	6 VDC (10.6W)
92	190 VDC (6.5W)
94	3 VDC (7W)
95	38 VDC (6.4W)
A1	24 VDC (1.0W)
A2	12 VDC (1.0W)
A3	9 VDC (1.0W)

MOD. DD01 : Protection diode (DC)

MOD. MOV1 : Protection varistor (AC)

MOD. DD01 : max. 8,5 W

MOD. MOV1 : max. 8,5 W

* Voltages are CLSF only

2. MANUAL OPERATOR

- XX Y ZZ	MANUAL OPERATOR
0	No operator
1	Non-locking recessed
2	Locking recessed
3	Non-locking extended
4	Locking extended

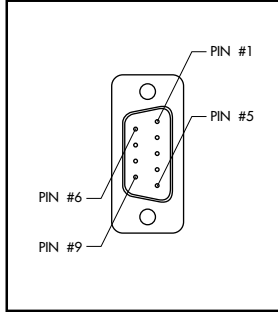
3. ELECTRICAL CONNECTION

- XX Y ZZ	ELECTRICAL CONNECTION
AA	Wiring box with 1/2" NPS conduit
BA	Flying leads
CA	1/2" NPS conduit
CC	1/2" NPT conduit
FA	Military type 2 PIN
GA	Military type 3 PIN
HA	AA with ground wire
JA	Square connector
JB	Rectangular connector
JC	Square connector with light
JD	Rectangular connector with light
JJ	Square connector, male only
JM	Rectangular connector, male only
NA	CA with ground wire
NC	CC with ground wire
RA	3/8" NPS conduit
CD	20 mm conduit

4. WIRE LENGTH

- XX Y ZZ (-VV)	WIRE LENGTH
AA	18"
AB	24"
AD	36"
AE	48"
AF	72"
AG	6"
AR	12"
AU	120"
BA	60"
BB	144"

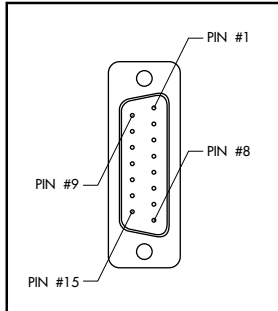
MOD. S009



TECHNICAL DATA

- Type «SUB_D»
- Number of contacts : 9
- Solder termination (Dia. 0.6 mm/0.14 mm²/26-22 AWG)
- Operating current 5 A/contact
- Rated voltage 125 V~
- Temp. range -40° to +125°C
- Insulation resistance ≥ 5.0⁹ Ω
- Protection class IP40 (DIN 40050)
- Number of solenoids : 7 max.
- Max. 24 V=/5.4 W per solenoid
- 2 common wires

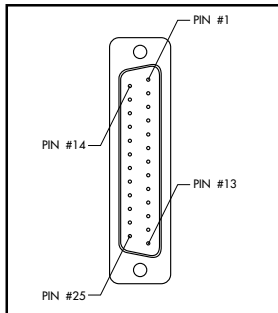
MOD. S015



TECHNICAL DATA

- Type «SUB_D»
- Number of contacts : 15
- Solder termination (Dia. 0.6 mm/0.14 mm²/26-22 AWG)
- Operating current 5 A/contact
- Rated voltage 125 V~
- Temp. range -40° to +125°C
- Insulation resistance ≥ 5.0⁹ Ω
- Protection class IP40 (DIN 40050)
- Number of solenoids : 12 max.
- Max. 24 V=/5.4 W per solenoid
- 3 common wires

MOD. S025



TECHNICAL DATA

- Type «SUB_D»
- Number of contacts : 25
- Solder termination (Dia. 0.6 mm/0.14 mm²/26-22 AWG)
- Operating current 5 A/contact
- Rated voltage 125 V~
- Temp. range -40° to +125°C
- Insulation resistance ≥ 5.0⁹ Ω
- Protection class IP40 (DIN 40050)
- Number of solenoids : 20 max.
- Max. 24 V=/5.4 W per solenoid
- 5 common wires

Note : Use desired MOD. number after circuit bar part number

Connector termination details

